

**Chapter 2
DEMOGRAPHICS**

This chapter describes selected population, housing, and income characteristics of Bridgewater Township. It presents current population estimates and the results of the 2010 U.S. Census, and relates them to historical data and to the larger jurisdictions where appropriate. An estimate of future population prepared by the Southeast Michigan Council of Governments (SEMCOG) is also presented.

POPULATION CHARACTERISTICS

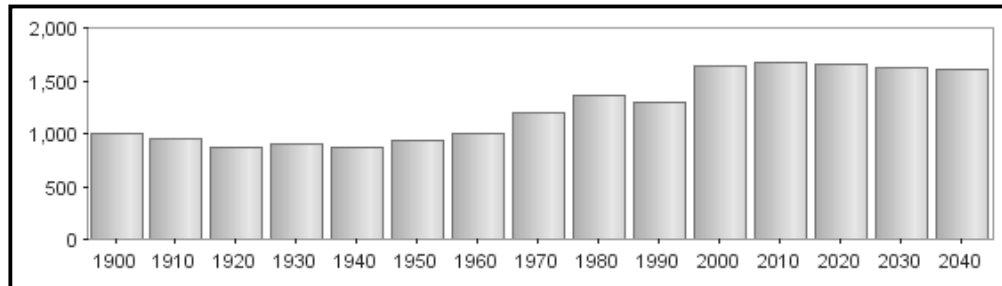
Population Projections

Between 1970 and 1980, and again between 1990 and 2000, the Township experienced double-digit percentage increases in population (13.8% in 1980 and 26.2% in 2000). However, the Southeastern Michigan Council of Governments has projected a generally flat rate of population change over the next two to three decades.

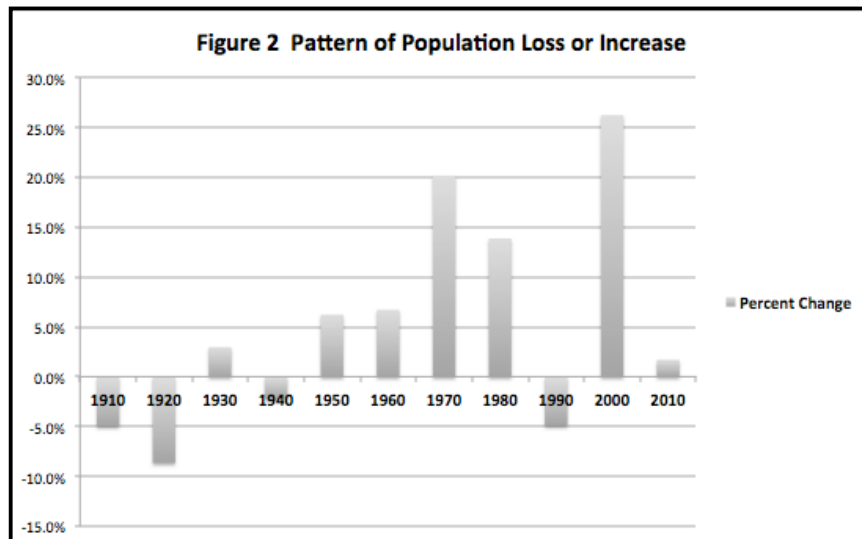
Table 1 Population History (1900 -2010)

1900	1910	1920	1930	1940	1950	1960	1970	1980	1990	2000	2010
1,011	961	878	904	884	939	1,002	1,204	1,371	1,304	1,646	1,674

**Figure 1
Population Projections (1900 – 2040)**



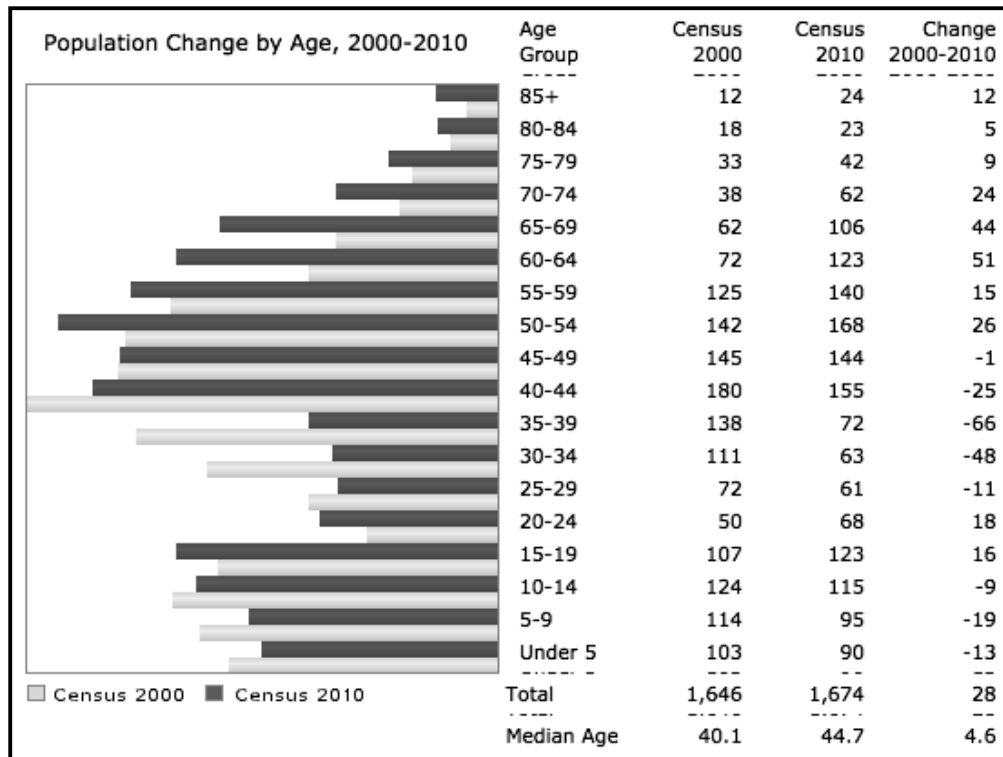
Source: Southeastern Michigan Council of Governments (SEMCOG).



Age Distribution and Trends

The population of Bridgewater Township is aging, reflecting national trends of Americans living longer and the “Baby Boomer” generation moving into their retirement years. Overall, the population of adults 65 years and older increased 57% between 2000 and 2010. At the same time, the population of young adults and families in their child-bearing years in the Township suffered a more than 40% decline from 2000 to 2010 (see Figure 3). The population of school-age children also dropped significantly during this period, even as the overall population numbers increased slightly. In demographic terms, these are fairly dramatic changes in a 10-year period.

**Figure 3
Population Change by Age (2000 – 2010)**



Source: Southeastern Michigan Council of Governments (SEMCOG).

Education

The people of Bridgewater Township are well educated. Based on the 2010 Census, 26% of Township residents 25 years or older have a bachelor’s degree or higher, and another 33% have a two-year college degree or have attended “some college.” Less than 5% of those in this age group reported not graduating from high school.

Household Characteristics

The average household in Bridgewater Township consisted on 2.67 persons, according to the 2010 United States Census. This is higher than both the Washtenaw County average of 2.38 persons and the State of Michigan average of 2.49 per household. 71.0% of households consisted of a “husband-wife family” according to the 2010 Census. Of these, 27.0% included children less than 18 years of age. 3.1% of Township households with children under 18 years old were led by single parents.

ECONOMIC MEASURES

Median Household Income

From 2000 to 2010, the median household income in Bridgewater Township has remained fairly flat, increasing less than 5% while the overall county's median household income rose 14.9% (see Table 2).

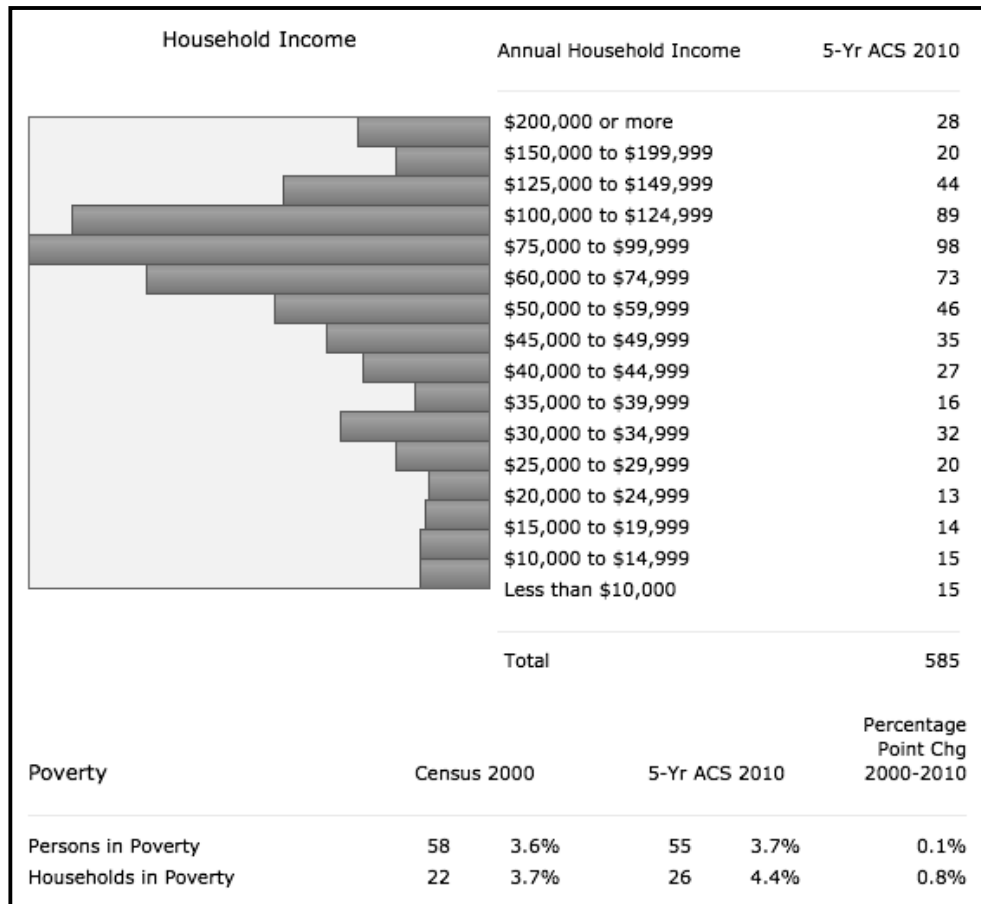
Table 2 Median Household Income (2000 – 2010)

Jurisdiction	2000	2010	Total Change 2000-2010	Percent Change
State of Michigan	\$44,667	\$48,669	\$4,002	8.9%
Washtenaw County	\$51,990	\$59,737	\$7,747	14.9%
Bridgewater Township	\$68,011	\$71,094	\$3,083	4.5%

Sources: 2000 United States Census and 2007-2011 American Community Survey 5-Year Estimates

4.4% of Township households lived below the federal poverty level in 2010, which represents a slight increase over the 2000 Census figure (see Figure 4).

Figure 4 Household Income Distribution (2010)



Source: Southeastern Michigan Council of Governments (SEMCOG).

