

**BRIDGEWATER TOWNSHIP BOARD OF TRUSTEES MEETING**  
**THURSDAY, APRIL 1, 2021, 7:00 P.M.**  
**BRIDGEWATER TOWNSHIP HALL**  
**10990 CLINTON RD, MANCHESTER, MI 48158**

**AGENDA**

- I. CALL TO ORDER / ESTABLISH QUORUM / PLEDGE ALLEGIANCE
- II. CITIZEN PARTICIPATION
- III. APPROVAL OF BOARD MEETING MINUTES – MARCH 4, 2021
- IV. REVIEW AND APPROVE AGENDA
- V. UNFINISHED BUSINESS
  - A. Gerken Materials Inc. 2020 Annual Report – Mining Review Response
- VI. WESTERN WASHTENAW RECYCLING AUTHORITY RESOLUTION  
Theo Eggermont, Public Works Director, WCWRC
- VII. NEW BUSINESS
  - A. Approval of Claims Listing for March 1, 2021 through March 31, 2021
  - B. Village of Clinton Fire Contract 2021-2023
  - C. WCRC Load Road Funding Packet & Draft Agreement
  - D. Jon Way Mowing Bid
- VIII. REPORTS & CORRESPONDANCE
  - A. Public Safety Report – Written report from Sheriff’s Department
  - B. Supervisor’s Report
  - C. Assessor’s Report
  - D. Clerk’s Report
  - E. Treasurer’s Report
  - F. Trustees’ Report
  - G. Broadband Task Force Report – Minutes included in Board packet
  - H. Zoning Administrator’s Report – Written report from Rodney Nanney
  - I. Planning Commission Report – March Meeting Cancelled
  - J. Farmland Preservation Board Report – No meeting in March
- IX. CITIZEN PARTICIPATION
- X. ADJOURNMENT

# Bridgewater Township Board of Trustees Minutes

## I. CALL TO ORDER

4-Mar-21 meeting held remotely via Zoom, called to order by Supervisor Fromhart at 7:00 p.m. followed by the Pledge of Allegiance.

Present: Trustee Faust; Trustee Fromhart; Trustee McQueer; Trustee Oliver; Trustee Ahrens

Absent: None

Citizen attendance: 6

## II. CITIZEN PARTICIPATION

- None

## III. APPROVAL OF MINUTES

- Motion to approve the 4-Feb-21 meeting minutes as drafted – Mr. Oliver; support – Mr. Faust; vote – unanimous.

## IV. REVIEW AND APPROVE AGENDA

- Motion to approve the agenda as presented – Mr. Oliver; support – Mr. Faust; vote – unanimous.

## V. PRESENTATION OF 2021-2022 FISCAL YEAR GENERAL FUND BUDGET

### A. Public Hearing

- Open public hearing at 7:08
- No public comment
- Close public hearing at 7:10

### B. Township Officers Salary Resolutions

- Motion to approve supervisor’s salary; resolution number 2021-02– Ms. McQueer; support – Mr. Oliver.
  - Roll call vote:

Trustee Faust – yes	Trustee Fromhart – yes	Trustee McQueer – yes
Trustee Oliver - yes	Trustee Ahrens - yes	
- Motion to approve clerk’s salary; resolution number 2021-03– Ms. Fromhart; support – Mr. Ahrens.
  - Roll call vote:

Trustee Faust – yes	Trustee Fromhart – yes	Trustee McQueer – abstain
Trustee Oliver - yes	Trustee Ahrens - yes	
- Motion to approve treasurer’s salary; resolution number 2021-04 – Ms. McQueer; support – Ms. Fromhart; vote.
  - Roll call vote:

Trustee Faust – yes	Trustee Fromhart – yes	Trustee McQueer – yes
Trustee Oliver - yes	Trustee Ahrens - abstain	
- Motion to approve trustee’s salary; resolution number 2021-05– Ms. Fromhart; support – Ms. McQueer – unanimous.
  - Roll call vote:

Trustee Faust – abstain	Trustee Fromhart – yes	Trustee McQueer – yes
Trustee Oliver - abstain	Trustee Ahrens- yes	

## Bridgewater Township Board of Trustees Minutes

### C. General Appropriations Act Resolution

- Motion to approve general appropriations act; resolution number 2021-06 as presented– Mr. Oliver; support –Mr. Faust.
  - Roll call vote:

Trustee Faust – yes	Trustee Fromhart – yes	Trustee McQueer – yes
Trustee Oliver - yes	Trustee Ahrens- yes	

### D. Sewer Fund Budget

- Vote delayed to next month.

## VI. NEW BUSINESS

### A. Approve Year-End General Fund Budget Amendments

- There was discussion about the budget amendments.
- Motion to approve year-end general fund budget amendments as amended – Ms. Fromhart; support – Mr. Faust; vote – unanimous.

### B. Approval of Claims Listing

- Motion to approve disbursements of \$19,569.26 for general operations and \$7,938.62 for sewer operations; total expenditure of \$27,507.88 for the month of February – Ms. Fromhart; support – Mr. Oliver; vote – unanimous.

### C. Gerken Materials Inc. 2021 Annual Report Reviewed by Beckett & Raeder.

- Mr. Kristofer Enlow from Beckett & Raeder gave an overview of the report.

### D. Board of Review Guidelines for Poverty/Hardship Exemptions Resolution – Motion to approve revised Resolution -Ms. Fromhart; support Ms. McQueer; vote unanimous.

### E. Appointment of Douglas Parr as SESC Inspector & Plan Reviewer -Motion to approve Appointment -Ms. McQueer; support Mr. Oliver; vote unanimous.

### F. Manchester First Robotics Run Manchester 2021 Proposal – Jacob Mann gave a presentation detailing the run this year. - Motion to approve the First Robotics Run Manchester 2021 in Bridgewater township as amended with Insurance rider for the Township -Ms. Fromhart; support Mr. Oliver; vote unanimous.

## VII. REPORTS AND CORRESPONDENCE

### A. Public Safety Report-

- The report is included in Board packet.

### B. Broadband Task Force Report

- The report is included in Board packet.

### C. Supervisor's Report

- See board packet plus:
  - Gerken Materials inspection.
  - County Parks talked about Moyad property being purchased for a preserve.
  - Board of commissioners.

## Bridgewater Township Board of Trustees Minutes

- BOR meeting next week.
- SWWCOG Zoom meeting.

### D. Assessor's Report

- No report was received from the assessor.

### E. Clerk's Report

- Talked about the May 6 special Clinton school election.

### F. Treasurer's Report

- Reported County settlement is in progress.
- All 2020 delinquent property taxes must be paid at the County Treasurers office.

### G. Trustees' Report

- Trustee Faust  
None
- Trustee Oliver  
None

### H. Broadband Task Force Report

- Minutes are included in Board packet.

### I. Zoning Administrator's Report

- A written report from Mr. Nanney is included in Board packet.

### J. Planning Commission

- Minutes are included in Board packet.

### K. Farmland Preservation Board Report

- No meeting in February

## VIII. CITIZEN PARTICIPATION

- None

## IX. ADJOURNMENT

- Ms. Fromhart adjourned the meeting at 8:43 p.m.

## Bridgewater Township Board of Trustees Minutes

### I. CALL TO ORDER

4-Feb-21 meeting called to order by Supervisor Fromhart at 7:08 p.m. followed by the Pledge of Allegiance at Bridgewater Township Hall, 10990 Clinton Road, Manchester, MI.

Present: Trustee Faust; Trustee Fromhart; Trustee McQueer; Trustee Oliver; Trustee Ahrens

Absent: None

Citizen attendance: 3

### II. CITIZEN PARTICIPATION

- None

### III. APPROVAL OF MINUTES

- Motion to approve the 7-Jan-21 meeting minutes as amended – Ms. Faust; support – Mr. Oliver; vote – unanimous.

### IV. REVIEW AND APPROVE AGENDA

- Motion to approve the agenda as presented – Mr. Oliver; support – Mr. Faust; vote – unanimous.

### V. UNFINISHED BUSINESS

Gerken Material Inc. Reclamation Bond Evaluation- Update – Progressing.

### VI. NEW BUSINESS

#### A. Approval of Claims Listing

- Motion to approve disbursements of \$21,884.73 for general operations and \$6,737.89 for sewer operations; total expenditure of \$28,622.62 for the month of January – Mr. Oliver; support – Mr. Faust; vote – unanimous.

#### B. MMLLPP Renewal Proposal 3/1/2021

- Motion to approve MMLLPP Renewal Proposal – Mr. Oliver; support – Ms. Ahrens; vote – unanimous.

#### C. 2021-2022 FY Budget Review

- Motion to set the public hearing date on the proposed general fund budget for 2021-2022 FY Budget Review for 4-Mar-21 – Ms. Fromhart; support – Mr. Oliver; vote – unanimous.
- Discussed ordinance to create a salary commission, agreed to present one next month.

### VII. REPORTS AND CORRESPONDENCE

#### A. Public Safety Report

- A written report from the sheriff's department was submitted and is on record

#### B. Broadband Task Force Report

- No Report

#### C. Supervisor's Report

- See board packet.
- March BOR
  - 02-08-21 9-12p.m. & 1-4p.m.
  - 02-09-21 1-4p.m. & 6-9p.m.

## Bridgewater Township Board of Trustees Minutes

### D. Assessor's Report

- A written report from Ms. Rider was submitted and is on record

### E. Clerk's Report

- Completed audit for State.
- Preparing for cleanup day.

### F. Treasurer's Report

- A written report from Ms. Ahrens was submitted and is on record.

### G. Trustees' Report

- Trustee Faust
- None
- Trustee Oliver
- None

### H. Zoning Administrator's Report

- A written report from Mr. Nanney was submitted and is on record

### I. Planning Commission

- Minutes from the Planning Commission were submitted and are on record.

### J. Farmland Preservation Board Report

- No Quorum

## VIII. CITIZEN PARTICIPATION

- None

## IX. ADJOURNMENT

- Ms. Fromhart adjourned the meeting at 8:30p.m.

## Project Description Western Washtenaw Recycling Project (WWRA)

The project will continue a recycling collection and processing system to serve various communities in the Western Washtenaw County area. It will include unstaffed recycling drop-off stations, or curbside collection at higher cost. There are education and awareness programs offered to promote recycling and proper disposal of materials. Tours are expected to resume once it is determined to be safe to do so again.

Clean materials accepted include, but not necessarily be limited to, newsprint, cardboard, aluminum/tin/empty aerosol cans, magazines, office paper, and plastic containers. Glass is collected separately and not permitted in curbside collection. Car and truck batteries and used motor oil can be brought to the facility for disposal; they are not accepted in drop offs or in curbside collections.

The annual operation and maintenance cost include the establishment of reserves necessary for future equipment replacement and to assure stability through fluctuating recyclable markets. The small price increase reflects the decrease in the value of the dollar over the past 10+ years due to inflation. Markets saw a significant decrease in value during 2018-2019 but have mostly recovered. Efforts by the State of Michigan are expected to increase end markets for recycled material, resulting in more resilient and stable market conditions. If markets perform at the rate expected, a reduction in the assessed amount is possible. **The resolution allows for a lesser amount to be charged, but not a greater amount.**

WWRA received a grant from EGLE for \$458,000 for an optical sorter and an automated truck. The improvements will increase safety and reduce expected expenditures related to collection and processing.

Why doesn't recycling pay for itself? The sale of the recyclable material does not cover the cost of providing the services. However, every ton of waste that is recycled avoids the cost of that material being sent to a landfill or incinerator. In addition, private haulers are providing fewer recycling opportunities often at a higher cost compared to the WWRA. This special assessment will be used so that we may continue the existing residential recycling collection and processing system that has served your community for over 20 years.

A RESOLUTION TO APPROVE THE WESTERN WASHTENAW RECYCLING  
AUTHORITY  
OPERATING AND MAINTENANCE RECYCLING FEES FOR NEW AND EXISTING  
DWELLING UNITS

BRIDGEWATER TOWNSHIP BOARD OF TRUSTEES

April 1, 2021

At a regular meeting of the Bridgewater Township Board, Washtenaw County, Michigan, held on the 1st of April 2021, at 7:00 p.m.

PRESENT:

ABSENT:

The following preamble and resolution were offered by \_\_\_\_\_ and seconded by:

WHEREAS, the Township of Bridgewater is a participating municipality of the "Western Washtenaw Recycling Authority"; and

WHEREAS, all residential dwelling units in the Township of Bridgewater are specially assessed to cover operation and maintenance costs of recycling services.

NOW, THEREFORE, BE IT RESOLVED that all new and existing dwelling units in the Township of Bridgewater shall be charged for recycling at the rate of not more than \$31 per year, per dwelling, each year on the winter property tax bill for years 2021-2025.

A vote on the above Resolution was taken and was as follows:

YEAS:

NAYS:



## CERTIFICATION

STATE OF MICHIGAN  
COUNTY OF WASHTENAW

I, Tom Wharam , the undersigned, being the acting Township Clerk for the Township of Bridgewater, Washtenaw County, Michigan, certifies that the foregoing is a true and complete copy of a resolution duly adopted by the Township Board of Trustees for Bridgewater Township at a public hearing held during a regular meeting on the 1st day of April 2021.

\_\_\_\_\_  
Dated

\_\_\_\_\_  
Tom Wharam  
Bridgewater Township Clerk

**Bridgewater Township General Fund**

**Monthly Expenses**

March 1 through April 1, 2021

<u>Type</u>	<u>Date</u>	<u>Num</u>	<u>Split</u>	<u>Amount</u>	
Bill	03/31/2021	EFT	Cardmember Service	2050 · Comerica - Clerk/Treasurer	87.15
Bill	03/31/2021	9903	Clayton and Mary Rider Assessing Service	-SPLIT-	1,825.00
Bill	03/31/2021	EFT	Consumers Energy	5265728 · Maintenance & Utilities	139.85
Bill	03/31/2021	EFT	Detroit Edison Company - Hall	5265728 · Maintenance & Utilities	52.90
Bill	03/31/2021	EFT	Detroit Edison Company - Street Lights	5440852 · Street lighting	371.57
Bill	03/31/2021	9904	Donald N. Pennington	-SPLIT-	1,108.75
Bill	03/31/2021	EFT	Frontier	5265728 · Maintenance & Utilities	107.79
Bill	03/31/2021	9905	Lucas Law, PC	-SPLIT-	232.50
Bill	03/31/2021	EFT	Paychex - payroll	-SPLIT-	5,151.24
Bill	04/01/2021	9906	Washtenaw County Treasurer	5440847 · Drains at large	54,833.70
					<b><u>63,910.45</u></b>

**Bridgewater Township**  
**Profit & Loss Budget vs. Actual**  
April 2020 through March 2021

	Apr '20 - Mar 21	Budget	\$ Over Budget
<b>Income</b>			
Clean-up Day Grant	1,527	1,527	-0
Clean Up Donation	107	107	0
4402 · Property tax - operation	103,338	81,070	22,268
4405 · Property tax - fire millage	17,567	51,000	-33,433
4447 · Tax administration fee	32,051	32,900	-849
4448 · Tax collection fees	3,405	4,500	-1,095
4460 · Township permits	500	500	0
4465 · Land division fees	525	500	25
4574 · Revenue sharing	149,926	147,042	2,884
4600 · Collection Fee-Sewer Fund	0	1,000	-1,000
4665 · Interest Income	62	3,500	-3,438
4675 · Metro Auth.-restricted to roads	3,739	3,739	0
<b>Total Income</b>	<b>312,747</b>	<b>327,385</b>	<b>-14,638</b>
<b>Gross Profit</b>	<b>312,747</b>	<b>327,385</b>	<b>-14,638</b>
<b>Expense</b>			
5101000 · Township Board			
5101703 · Trustee salary	4,896	4,896	0
5101727 · Township supplies & expenses	159	800	-641
<b>Total 5101000 · Township Board</b>	<b>5,055</b>	<b>5,696</b>	<b>-641</b>
5171000 · Supervisor			
5171703 · Supervisor Salary	15,920	15,920	0
5171727 · Supervisor Expense	86	500	-414
5209000 · Assessor			
5209705 · Board of Review expenses	1,075	1,600	-525
5209805 · Assessor Wages	20,800	20,800	0
5209810 · Assessor Expense	1,555	2,800	-1,246
<b>Total 5209000 · Assessor</b>	<b>23,430</b>	<b>25,200</b>	<b>-1,771</b>
<b>Total 5171000 · Supervisor</b>	<b>39,436</b>	<b>41,620</b>	<b>-2,184</b>
5173000 · Other General Government			
5173715 · Social Security	4,519	5,000	-481
5173801 · Attorney & Consulting Expenses	938	2,500	-1,563
5173802 · Audit fees	5,000	5,000	0
5173811 · Membership fees & dues	2,082	2,082	0
5173895 · Website Administrator	500	500	0
5173912 · Insurance & Bonds	12,171	5,259	6,912
<b>Total 5173000 · Other General Government</b>	<b>25,210</b>	<b>20,341</b>	<b>4,869</b>
5215700 · Clerk			
5173900 · Printing & publishing	495	800	-305
5174810 · Deputy Clerk	3,619	3,619	-0
5191727 · Election expense	4,324	4,324	0
5215703 · Clerk salary	16,539	16,539	0
5215727 · Clerk supplies & expense	3,443	3,700	-257
<b>Total 5215700 · Clerk</b>	<b>28,420</b>	<b>28,982</b>	<b>-562</b>
5253700 · Treasurer			
5253701 · Tax Collection Expense	1,655	2,500	-845
5253703 · Treasurer salary	17,967	17,967	0
5253704 · Deputy Treasurer Wages	906	1,600	-694
5253727 · Treasurer supplies & expenses	1,319	2,000	-681
<b>Total 5253700 · Treasurer</b>	<b>21,847</b>	<b>24,067</b>	<b>-2,220</b>

Mar 26, 2021  
 Accrual Basis

## Bridgewater Township Profit & Loss Budget vs. Actual April 2020 through March 2021

	Apr '20 - Mar 21	Budget	\$ Over Budget
<b>5265000 · Building &amp; Grounds</b>			
5265728 · Maintenance & Utilities	7,246	8,000	-754
5265925 · Cemetery care	2,305	2,305	0
5265980 · Building improvement & equipmen	1,084	1,200	-116
<b>Total 5265000 · Building &amp; Grounds</b>	10,636	11,505	-869
<b>5301800 · Public Safety</b>			
5339727 · Fire protection billing expense	44,475	68,000	-23,525
<b>Total 5301800 · Public Safety</b>	44,475	68,000	-23,525
<b>5400700 · Planning &amp; zoning</b>			
5400701 · Planning			
5400727 · Planning comm. wage & expense	1,750	3,000	-1,250
5400803 · Planning consultant - on-going	4,293	5,000	-708
5411810 · Conferences & Training	0	500	-500
<b>Total 5400701 · Planning</b>	6,043	8,500	-2,458
5410726 · Zoning			
5410704 · Land Division Processing Fees	1,325	1,700	-375
5410727 · Zoning ad.wage & expense	7,440	7,500	-60
<b>Total 5410726 · Zoning</b>	8,765	9,200	-435
<b>Total 5400700 · Planning &amp; zoning</b>	14,808	17,700	-2,893
<b>5440000 · Public works</b>			
5440846 · Road Improvements	16,831	16,831	0
5440849 · Clean-up Day	1,969	1,986	-17
5440852 · Street lighting	4,728	5,000	-272
<b>Total 5440000 · Public works</b>	23,529	23,817	-288
5500000 · Contingencies	0	500	-500
66900 · Reconciliation Discrepancies	-7	0	-7
<b>Total Expense</b>	213,407	242,228	-28,821
<b>Net Income</b>	<b>99,340</b>	<b>85,157</b>	<b>14,183</b>

# Bridgewater Township General Fund

## Balance Sheet

As of March 31, 2021

Mar 26, 2021  
Accrual Basis

	Mar 31, 21
<b>ASSETS</b>	
<b>Current Assets</b>	
<b>Checking/Savings</b>	
1002 · General Checking-Key Bank	99,168.04
1010 · General Savings-Key Bank	94,332.83
1016 · Bank of Ann Arbor 5yr	103,665.96
1017 · Old National 5 yr	113,811.78
<b>Total Checking/Savings</b>	410,978.61
<b>Accounts Receivable</b>	
1200 · Accounts Receivable	762.00
<b>Total Accounts Receivable</b>	762.00
<b>Other Current Assets</b>	
1034 · Tax Receivable-PPT	-32.61
1050 · Current Year Tx Roll Receivable	
1090 · Due from County - Settlement	-2,971.78
1050 · Current Year Tx Roll Receivable - Other	-1,162.15
<b>Total 1050 · Current Year Tx Roll Receivable</b>	-4,133.93
1081 · Due from Sewer Operations	-771.47
1085 · Due From Tax Fund	-2,210.00
1087 · Due from Dr. Samuels	-100.67
1201 · Accounts Receivable 2	1,590.00
<b>Total Other Current Assets</b>	-5,658.68
<b>Total Current Assets</b>	406,081.93
<b>Fixed Assets</b>	
1600 · Buildings	98,329.35
1610 · Equipment	28,244.21
1620 · Land	70,863.09
1630 · Siding & Windows	17,049.00
1640 · Township Hall Improvements	54,079.30
1650 · Accumulated Depreciation	-95,648.85
<b>Total Fixed Assets</b>	172,916.10
<b>TOTAL ASSETS</b>	<b>578,998.03</b>
<b>LIABILITIES &amp; EQUITY</b>	
<b>Liabilities</b>	
<b>Current Liabilities</b>	
<b>Accounts Payable</b>	
2000 · Accounts Payable	-54,833.70
<b>Total Accounts Payable</b>	-54,833.70
<b>Credit Cards</b>	
2050 · Comerica - Clerk/Treasurer	-1,534.92
<b>Total Credit Cards</b>	-1,534.92
<b>Other Current Liabilities</b>	
2100 · Payroll Liabilities	-377.79

**Bridgewater Township General Fund**

**Balance Sheet**

**As of March 31, 2021**

Mar 26, 2021  
Accrual Basis

---

	<u>Mar 31, 21</u>
2217 · Escrow Deposits Payable	
2220 · Due to SMR-Elliott parcel	2,500.00
2233 · Due to SMR-Crego/Peltcs	-8,112.01
2252 · Due Metro General Contractors	1,000.00
2253-01 · Due to Bridgewater Commons	50.00
2253-02 · Bridgewater Commons - Landscapi	2,000.00
2255 · Barbu Escrow	-688.52
	<hr/>
<b>Total 2217 · Escrow Deposits Payable</b>	-3,250.53
	<hr/>
<b>Total Other Current Liabilities</b>	-3,628.32
	<hr/>
<b>Total Current Liabilities</b>	-59,996.94
	<hr/>
<b>Total Liabilities</b>	-59,996.94
	<hr/>
<b>Equity</b>	
3900 · Fund Balance	366,738.44
3940 · Invested in Capital Assets, Net	172,916.84
Net Income	99,339.69
	<hr/>
<b>Total Equity</b>	638,994.97
	<hr/>
<b>TOTAL LIABILITIES &amp; EQUITY</b>	<b>578,998.03</b>
	<hr/> <hr/>

## Bridgewater Township Sewer Operation Monthly Expenses

March 2021						
Type	Date	Num	Name	Split	Amount	
<b>Mar 21</b>						
Bill	03/30/2021	1506		Bridgewater Township	Due to General Fund	1,200.00
Bill	03/30/2021	ETF		DTE Energy	Electricity	2,124.71
Bill	03/30/2021	1502	245207	DuBois-Cooper Associates	Equipment Repairs	2,369.00
Bill	03/30/2021	ETF		Frontier	Phone Service	69.35
Bill	03/30/2021	1503		Haviland	-SPLIT-	1,263.75
Bill	03/30/2021	1504		Tom Thompson	Supplies	76.50
Bill	03/30/2021	1505		Village of Manchester	Plant Operator	2,965.56
<b>Mar 21</b>						<b><u>10,068.87</u></b>

**Bridgewater Township Sewer Operation  
Profit & Loss Budget vs. Actual  
April 1, 2020 through March 26, 2021**

	Apr 1, '20 - Mar 26, 21	Budget
<b>Ordinary Income/Expense</b>		
<b>Income</b>		
<b>Connection Fees</b>		
Easement Fee	125.00	0.00
Grinder Pump Reimb + 10%	8,189.20	0.00
Inspection Fee	150.00	0.00
Tap Fee	44,029.90	0.00
<b>Total Connection Fees</b>	52,494.10	0.00
<b>Interest Income Master Account</b>		
Interest Income Checking	41.40	0.00
Interest Income Master Account - Other	0.00	150.00
<b>Total Interest Income Master Account</b>	41.40	150.00
<b>Operation Maintenance Income</b>	102,800.00	101,500.00
<b>Total Income</b>	155,335.50	101,650.00
<b>Gross Profit</b>	155,335.50	101,650.00
<b>Expense</b>		
<b>Collection System</b>		
<b>Billing</b>		
Billing Clerk	1,100.00	1,200.00
Office Supplies	0.00	200.00
<b>Total Billing</b>	1,100.00	1,400.00
<b>Collection System Equip Repairs</b>	0.00	3,000.00
Depreciation	8,380.00	0.00
Forcemains -Flushing & Disposal	0.00	1,000.00
Grinder Pump repairs	8,154.89	10,000.00
Miss Dig Locator Service	2,004.82	4,500.00
<b>Total Collection System</b>	19,639.71	19,900.00
<b>Insurance</b>	4,203.00	1,500.00
<b>Legal &amp; Professional</b>		
Audit	1,300.00	1,500.00
Engineer	0.00	1,000.00
Legal Fees	0.00	500.00
<b>Total Legal &amp; Professional</b>	1,300.00	3,000.00



Mar 26, 21  
Accrual Basis

**Bridgewater Township Sewer Operation**  
**Profit & Loss Budget vs. Actual**  
April 1, 2020 through March 26, 2021

	<u>Apr 1, '20 - Mar 26, 21</u>	<u>Budget</u>
<b>Treatment Plant</b>		
Building & Grounds Maintenance	1,989.75	2,500.00
Chemicals	4,995.89	4,500.00
Diesel Fuel/Propane	733.09	800.00
Electricity	18,603.26	20,000.00
Equipment Repairs	3,358.46	4,000.00
Generator Maintenance Contract	973.70	1,000.00
NPDES Permit	2,395.20	2,000.00
Phone Service	946.99	600.00
Plant Operator	28,678.56	33,600.00
Sludge Handling & Disposal	750.00	4,500.00
Supplies	108.18	500.00
<b>Total Treatment Plant</b>	<u>63,533.08</u>	<u>74,000.00</u>
<b>Total Expense</b>	<u>88,675.79</u>	<u>98,400.00</u>
<b>Net Ordinary Income</b>	<u>66,659.71</u>	<u>3,250.00</u>
<b>Net Income</b>	<u><u>66,659.71</u></u>	<u><u>3,250.00</u></u>

# Bridgewater Township Sewer Operation

## Balance Sheet

As of March 31, 2021

Mar 26, 2021  
Accrual Basis

	Mar 31, 21
<b>ASSETS</b>	
<b>Current Assets</b>	
Checking/Savings	
Key-Sewer O/M	
Capital Improvements Reserve	30,000.00
Key-Sewer O/M - Other	60,087.91
<b>Total Key-Sewer O/M</b>	90,087.91
Key Sewer O/M Saving	103,138.55
Key Sewer Retirement Checking	71,287.21
<b>Total Checking/Savings</b>	264,513.67
Accounts Receivable	
Accounts receivable	13,450.00
<b>Total Accounts Receivable</b>	13,450.00
<b>Other Current Assets</b>	
Due From Tax	9,169.10
Taxes Receivable Special Asst	-7,689.98
<b>Total Other Current Assets</b>	1,479.12
<b>Total Current Assets</b>	279,442.79
<b>Fixed Assets</b>	
Accessory Building	53,320.02
Accumulated Depr - Access Bldg	-9,360.65
Equipment	101,752.20
Accumulated Depr - Equipment	-30,125.44
Sewer System Plant	1,966,444.05
Accumulated Depr - Sewer System	-680,061.78
Land	55,355.06
<b>Total Fixed Assets</b>	1,457,323.46
<b>Other Assets</b>	
Special Assessment Receivable	25,649.84
<b>Total Other Assets</b>	25,649.84
<b>TOTAL ASSETS</b>	<b>1,762,416.09</b>
<b>LIABILITIES &amp; EQUITY</b>	
<b>Liabilities</b>	
<b>Current Liabilities</b>	
Other Current Liabilities	
2004 Bond Pmt Due in One Yr	-74,024.00
<b>Total Other Current Liabilities</b>	-74,024.00
<b>Total Current Liabilities</b>	-74,024.00
<b>Total Liabilities</b>	-74,024.00
<b>Equity</b>	
Invested in capital assets, net	1,317,951.48
Restricted for Debt Service	240,753.85
Unrestricted Funds (QB RE acct)	189,984.13
Net Income	87,750.63
<b>Total Equity</b>	1,836,440.09
<b>TOTAL LIABILITIES &amp; EQUITY</b>	<b>1,762,416.09</b>

# Village *of* Clinton

---

SERVING CLINTON SINCE 1829

February 23, 2021

Mrs. Laurie Fromhart, Supervisor  
Bridgewater Township  
10990 Clinton Road  
Manchester, MI, 48158

Dear Mrs. Fromhart:


The Clinton Fire Department would like to renew the 2019 Contract for Fire Department Services for another two-year term. The Department has been very good at holding costs to modest rate increases the last several contracts. This contract we are forced to increase charges by five percent to reflect the cost of providing services.

The National Fire Protection Association (NFPA) continues to place more stringent and costly regulations on fire departments to help protect fire fighters and the general public. The Department just spent \$127,000 for new Self-Contained Breathing Apparatus (SCBA). Fortunately, some of that cost was offset by a federal grant. The Department has to replace fire fighter turnout gear every few years at a cost of \$3,500 each. The Department has to periodically make expensive repairs to the fire apparatus to keep it operational. The Department is in the process of trying to replace the two 1994 pumper-tanker trucks in the next few years for a cost of about \$425,000 each.

Clinton Township, the Village of Clinton and the Clinton Fire Department value our relationship with you and consider ourselves fortunate to be able to continue providing fire and emergency services to your residents. Attached is the Contract for Fire Department Services for April 1, 2021 through March 31, 2023. We realize you may need a couple months to work this into your agenda, so we will continue the existing contract on a monthly basis in the meantime.

Please let me know if you would like the Fire Chief and me to attend your board meeting. We would appreciate you executing three copies of the contract and returning them to the Village. We will then forward an executed copy to you for your records. Do not hesitate to contact us if you have any questions or wish to discuss this further.

Sincerely,



Kevin Cornish,  
Village Manager



## CONTRACT FOR FIRE DEPARTMENT SERVICES

THIS AGREEMENT, made this \_\_\_\_ day of March 2021, by and between the Village of Clinton and Clinton Township, Lenawee County, Michigan (second party) who jointly govern the Clinton Fire Department and Bridgewater Township (first party), Washtenaw County, Michigan, herein after referred to as the "Township".

WITNESSETH:

WHEREAS, The Township finds it necessary in order to Guard against the occurrence of fires and to protect the property and lives of its citizens against damages and accidents resulting therefore, to make this contract for fire protection in accordance with the laws of the State of Michigan; and,

WHEREAS, the Village of Clinton and Clinton Township has jointly and fully organized volunteer Fire Department and Emergency Rescue Squad and is ready, willing and able to enter into this contract and to furnish fire protection and emergency services and the services of its equipment and departments to and on behalf of the Township.

NOW THEREFORE, in consideration of the promises, the Village of Clinton and Clinton Township jointly agree to furnish its services within the bounds of the Township, as defined by the attached map outlining the agreed upon service territory, by furnishing sufficient manpower to operate its available equipment upon call for the following period of time: beginning on the 1<sup>st</sup> DAY OF April 2021 through the 31<sup>st</sup> DAY OF March 2023 (2-YEAR CONTRACT) and may be terminated by either party upon sixty (60) days written notice, and the Township agrees to pay as follows:

1. Starting April 1, 2021, there will be a base fee equal to four (4) quarterly payments of \$7,166 each. All fire/rescue, medical emergency and hazardous material incident calls will be charged against the annual \$28,665 base fee at the rates agreed to in this contract. The Township will be billed quarterly for base fee and payment will be due within 45 days of billing date.
2. The Township will be billed for any calls in excess of the annual base fee. All bills will be due and payable within 45 days of the billing date.
3. Fire rescue, medical emergency calls and hazardous material incidents will be billed based on the following fee schedule:
  - a. Fire and rescue calls will be billed at \$840 for the first two (2) hours. Any additional hours will be billed at \$315 per hour. Hours will be calculated to the

nearest one half-hour. The incident commander will use prudent judgment and have sole discretion as to how long the department needs to be on a scene. Calls that are cancelled before the fire department has been on the scene for 15 minutes and was not required to take any action will be billed at \$346 per call. Fire/rescue calls will be defined generally consistent with NFPA. Fire calls will include, but not be limited to, structure fires, vehicle and equipment fires, grass and brush fires, rubbish fires, smoke and fire investigations. It will also include any other situation that involves smoke or fire or any reasonably related cause.

Rescue calls will include situations where an individual is injured or needs assistance getting out of a dangerous or potentially dangerous situation. It shall include, but not be limited to personal injuries, vehicular and equipment accidents, aircraft accidents, citizen's assist and a search team.

- b. Medical emergency calls will be billed at \$420 for the first two (2) hours. Any additional hours will be billed at \$157 per hour. Hours will be calculated to the nearest one-half hour. The incident commander will use prudent judgment and have sole discretion as to how long the department needs to be on a scene. Calls that are cancelled before the fire department has been on the scene for 15 minutes and was not required to take any action will be billed at \$173 per call. Medical emergency calls will be defined as being generally consistent with NFPA. They shall include, but not be limited to, situations where an individual has a medical reason for emergency assistance.
- c. Hazardous material incident calls will be billed at \$840 for the first two (2) hours. Any additional hours will be billed at \$315 per hour. Hours will be calculated to the nearest one half-hour. The incident commander will use prudent judgment and have sole discretion as to how long the department needs to be on a scene. Calls that are cancelled before the fire department has been on the scene for 15 minutes and was not required to take any action will be billed at \$346 per call.

A hazardous material incident will be defined generally consistent with NOVA. In the event of a spill, leakage, releases, or other dissemination of any hazardous material, the Clinton Fire chief or his/her authorized representative, shall determine whether such occurrence constituted an emergency hazardous materials incident, and if so determined, the Clinton Fire Department may take immediate steps to abate and control the hazardous materials.

The first party agrees to pay for all costs incurred by the Clinton Fire Department that are in addition to the base fee charged for a Hazardous Material incident call. Those extra costs shall include, but not be limited to, all labor costs to the Clinton Fire Department, all administrative overhead, costs of equipment, costs of equipment operation, costs of materials, costs of disposal, costs of any contract labor, equipment and materials, materials, attorney fees, professional consultant

fees and any other cost associated with an emergency hazardous materials incident. Expenses shall include the charges or costs incurred by the Clinton Fire Department as a result of a HazMat unit response to a hazardous materials incident.

4. The second party will bill the first party quarterly for the base fee. The first party will make payment in full within 45 days from billing date or have a ten percent penalty added to the outstanding balance every 30 days the bill is not paid in full.
5. It is expressly understood and agreed by the parties hereto that said second party shall have no liability for failure to reach any emergency including availability of volunteer fire fighters, on account of weather conditions, failure of equipment, road conditions, or previous engagement of its equipment by another call or calls, nor on account of any other situation or condition beyond its control. First party agrees to hold harmless and indemnify Second Party from any and all claims, including costs of defense, made by any third party and arising in any way out of Second Party's performance or claimed non-performance hereunder.
6. The Village of Clinton, Clinton Township and the Clinton Fire Department, can assert any defense or immunity as if they were the duly comprised fire department of the Township.
7. It is agreed and understood that if a difference should arise between the contracting parties, they will use a court of competent jurisdiction in Lenawee County as a last resort.

IN WITNESS, WHEREOF The parties have hereunto set their hands the day and year first written above.

BRIDGEWATER TOWNSHIP, COUNTY OF WASHTENAW, STATE OF MICHIGAN

BY:

\_\_\_\_\_  
Laurie Fromhart, Township Supervisor

\_\_\_\_\_  
Date

\_\_\_\_\_  
Michelle McQueer, Township Clerk

\_\_\_\_\_  
Date

CLINTON TOWNSHIP, COUNTY OF LENAWE, STATE OF MICHIGAN

BY:

\_\_\_\_\_  
Basil Greenleaf, Supervisor

\_\_\_\_\_  
Date

\_\_\_\_\_  
Joann Steffens, Clerk

\_\_\_\_\_  
Date

VILLAGE OF CLINTON, COUNTY OF LENAWE, STATE OF MICHIGAN

BY:

\_\_\_\_\_  
Doris Kemner, President

\_\_\_\_\_  
Date

\_\_\_\_\_  
Jennifer Adams, Clerk

\_\_\_\_\_  
Date

## Bridgewater Township Local Road Packet

---

From: Siddall, Sheryl (siddalls@wcroads.org)  
To: bridgewaterwpsupervisor@yahoo.com  
Cc: harmonj@wcroads.org  
Date: Friday, March 19, 2021, 03:52 PM EDT

---

Good Afternoon, Laurie,

I hope your spring is off to a good start. Here at WCRC, we have been busy patching potholes on our paved and unpaved roads and preparing for the 2021 construction season.

This preparation includes working with each township to develop the local road program for the season. Jim Harmon and our district foremen have already initiated these conversations with each township. I look forward to seeing what investments we can make together on local roads this year.

If you were able to attend one of our Road Funding 101 sessions in January, you know that funding for local road investments is very different than funding on primary roads. With this in mind, we have revised our traditional Local Road Funding Program Packet to help better explain the process. I hope you find the new format helpful and informative. Your township's packet for 2021 is attached and can also be found online: [wcroads.org/doing-business/townships/](http://wcroads.org/doing-business/townships/)

If you would like to learn even more about asset management, I highly encourage you to attend a free virtual "[Transportation Asset Management for Local Officials](#)" workshop on Tuesday, March 30, from 9 a.m. – noon (flyer attached). This workshop is hosted by the Michigan Transportation Asset Management Council and Michigan Tech's Center for Technology and Training.

We look forward to continuing to work with you and your township. If you have any questions about the information in this packet or road funding in general, please don't hesitate to reach out to Jim Harmon or me.

I hope you have a great weekend.

Sincerely,

Sheryl

P.S. If you were unable to attend one of our Road Funding 101 sessions in January, [click here to watch the meeting recording](#).

**Sheryl Soderholm Siddall, P.E.**

Managing Director

Washtenaw County Road Commission

555 N. Zeeb Road, Ann Arbor, Michigan

Direct: (734) 327-6687 | Main: (734) 761-1500

[wcroads.org](http://wcroads.org) | [Follow us on Facebook](#)



# Road Funding 201: Local Roads in Washtenaw County

*Spring 2021*



Questions? Contact Us!

Sheryl Soderholm Siddall P.E., Managing Director, [siddalls@wcroads.org](mailto:siddalls@wcroads.org), (734) 327-6687

Jim Harmon, P.E., Director of Operations, [harmoni@wcroads.org](mailto:harmoni@wcroads.org), (734) 327-6653

## Contents

Introduction .....	3
Bridgewater Township Summary .....	3
Funding for Local Roads.....	4
Overview .....	4
Local Road Matching Program.....	5
Conventional Local Road Match.....	5
Drainage Local Road Match .....	5
Regulated Local Road Culvert and Bridges.....	5
Planning Your Investments .....	6
Inventory and Condition Assessment.....	6
Paved Roads .....	6
Unpaved Roads .....	8
Bridges and Culverts .....	8
Mix of Fixes .....	9
Paved Roads .....	9
Unpaved Roads.....	10
Bridges and Culverts .....	10
Project Selection .....	11
Funding Options for Townships .....	11
Act 51 Millage.....	11
Township-Wide Millage .....	12
Special Assessment Districts (Township-wide or Neighborhood-to-Neighborhood) .....	12
Appendix A: Public Road Miles Chart, By Township .....	13
Appendix B: Local Road Matching Program Conditions .....	14
Appendix C: 2021 Local Road Matching Funds, By Township .....	16
Appendix D: Township Contribution Summary, 2017 – 2020 .....	17
Appendix E: Local Collector Road Culverts – County-wide Map .....	18
Appendix F: Life of a Road Flyer .....	20
Appendix G: Summary of Local Road Needs, By Township.....	22
Appendix H: Taxable Valuation Data, By Township .....	23
Appendix I: Summary of Revenue Generated with a Township-Wide Special Assessment District (SAD), By Township.....	24

## Introduction

Each year, the Washtenaw County Board of County Road Commissioners (the WCRC Board) and township boards partner to provide local road improvements to the residents of Washtenaw County. While road funding is limited, these parties work hard to spend this precious limited funding efficiently and effectively. The following packet was assembled for both seasoned officials who are very familiar with the process and for officials new to their positions to help them better under the intricacies of local road funding.

## Bridgewater Township Summary

The following is a summary of the roads, bridges and culverts located in Bridgewater Township and the 2021 allocation made by the WCRC Board for local roads in Bridgewater Township.

### Primary Roads

- 12.24 miles of paved primary roads
- 9.16 miles unpaved primary roads
- 1 bridges (more than 20' span)
- 6 culverts, greater than 5' in diameter

### Local Roads

- 0 miles of local paved roads
- 40.23 miles of local unpaved roads
- 3 bridges (more than 20' span)
- 6 culverts on local collector roads, greater than 5' in diameter

## 2021 Local Road Matching Program Allocation

Notification of the intent to use matching funds is due to WCRC by **Friday, May 21, 2021**.

Township	Conventional Local Road Match	Drainage Local Road Match	Total Matching Funds Available
Bridgewater	\$25,889	\$11,526	\$37,415

## Local Road Needs

Township	Paved Local Road Needs	Unpaved Local Road Needs	Total Needs	Average 10-year Annual Expenditure Needed
Bridgewater	\$164,100	\$3,244,000	\$3,408,100	\$340,810

## Historic Township Road Contributions 2017 – 2020

Township	2017	2018	2019	2020	4 -Year Annual Average
Bridgewater	\$28,245	\$12,543	\$64,606	\$16,831	\$30,556

### Contact Information

District Foreman	Director of Operations	WCRC's Customer Service
<p>Roark Freeman  <a href="mailto:freemanr@wcroads.org">freemanr@wcroads.org</a>                      Office: (734) 761-1500 ext. 604</p>	<p>Jim Harmon  <a href="mailto:harmonj@wcroads.org">harmonj@wcroads.org</a>                      Office: (734) 327-6653</p>	<p>Main phone: (734) 761-1500  <a href="mailto:wcrc@wcroads.org">wcrc@wcroads.org</a>                      Submit a road request via <a href="http://wcroads.org">wcroads.org</a> or download the WCRC Fix It App</p>

## Funding for Local Roads

### Overview

Roads in Michigan have been chronically underfunded for decades. There are numerous reasons behind this fact but no matter the cause, Michiganders see the results – many, many miles of poor roads.

This is especially true for local roads, which connect people from the primary road system to their homes and businesses. Local roads can be further divided into local collector roads and subdivision roads. Local collector roads are those that connect residential and business areas to the primary road system. Local subdivision roads mostly service residents or businesses within subdivisions and business parks.

Washtenaw County has more than 1,060 centerline miles of local roads. See Appendix A for a chart breaking down mileage by township.

Primary and local designations are determined by MDOT. These designations are critical since they play an important role in how much WCRC receives from the Michigan Transportation Fund (MTF)<sup>1</sup>. In 2020, WCRC received \$2,483 for each mile of rural primary road and \$2,726 for each mile of rural local road. In the urban areas, the amount increases to reflect additional traffic and lanes. The urban primary roads receive \$16,684 per mile and urban local roads receive \$5,093 per mile.

In addition to this part of the formula, WCRC receives funds from vehicle registration fees collected through the Secretary of State. Vehicle registration fees are distributed to county road agencies based the number of vehicles registered in each county.

<sup>1</sup> Michigan Transportation Fund (MTF) is WCRC's primary source of funding. It is made up of revenue from state fuel tax and vehicle registration fees which are allocated through a formula to MDOT, county road commissions and cities/villages. WCRC is expecting to receive \$32,000,000 from MTF in 2021.

## **Local Road Matching Program**

Unfortunately, the MTF allocated for local roads barely covers WCRC's costs for routine maintenance such as snow plowing, pothole patching and grading. In addition, under current state law, any improvements to a local road (for example resurfacing) must have at least 50% of its funding come from a source other than the road commission, often the township.

Knowing that local road funding is challenging, the WCRC Board has historically transferred funds from the Primary Road Fund to the Local Road Fund, even though this transfer limits maintenance activity on the primary road system. These monies are used to fund WCRC's Local Road Matching Program.

WCRC's Local Road Matching Program is made up of three matching programs.

1. Conventional Local Road Match
2. Drainage Local Road Match
3. Local Road Culverts and Bridges

The full conditions of the Local Road Matching Program can be found in Appendix B.

### **Conventional Local Road Match**

For 2021, the WCRC Board has assigned \$1,100,000 to the Conventional Local Road Match Program. This is the same amount as in 2020. This is a countywide allocation for local roads in all twenty townships based on the distribution formula used by MDOT to distribute local road funds to the 83 counties of Michigan.

As part of this formula, urban local road miles receive additional funds which is reflected in the amounts available to the eligible townships. Ann Arbor, Augusta, Dexter, Lima, Lodi, Northfield, Pittsfield, Salem, Saline, Scio, Superior, Sylvan, Webster, York and Ypsilanti Townships are within the urban area and their matching fund allocations show these additional amounts.

### **Drainage Local Road Match**

The WCRC Board has assigned \$200,000 to the 2021 Drainage Local Road Match. Funding distribution for this program is based on the total uncurbed, non-subdivision local road centerline mileage for each township.

These funds can only be spent on local uncurbed, non-subdivision roads. Eligible work activities include roadside berm removal, ditch establishment & restoration, small culvert installation, rehabilitation or replacement.

### **Regulated Local Road Culvert and Bridges**

In addition, the WCRC Board has committed to covering 50% of the cost to replace local road culverts and bridges that require permits from the Michigan Department of Environment, Great Lakes, and Energy (EGLE) and/or the Washtenaw County Water Resources Commissioner's Office.

These types of structures are usually larger and more expensive to fix or replace. This funding source is in addition to the Conventional Local Road Match Program and Drainage Local Match Program and is applied on a case-by-case basis in partnership with interested townships.

See Appendix C for a listing of each township's matching fund allocation. See Appendix D for a listing of each township's contribution from 2007 – 2020.

## **Planning Your Investments**

Roads and the roadway, like any other public infrastructure, require a lot of investment. Unfortunately, in Michigan the needs far outweigh the funds available in any given year. So, how do WCRC and townships in Washtenaw County decide the best way to invest limited funds?

WCRC utilizes the principals of asset management when planning investments. According to Michigan's Transportation Asset Management Council, asset management is the, "Ongoing process of maintaining, preserving, upgrading and operating physical assets cost-effectively, based on a continuous physical inventory and condition assessment and investment to achieve established performance goals."

While this may be a daunting definition, the overall concept is simple and similar to vehicle maintenance – you want to make the right fix at the right time in the right place. Most of us change the oil, rotate tires, replace batteries and make other small repairs to keep our vehicles in good shape. We know if we do nothing that we will be replacing that vehicle sooner than if we keep up good maintenance practices. We also know that it makes little sense to make minor repairs to a vehicle that no longer runs. Staying on top of low-cost maintenance items is more cost-effective in the long run.

## **Inventory and Condition Assessment**

For asset management to be effective, an agency must first understand what assets are under its jurisdiction and the current conditions of these assets. This is done through an inventory or physical inspection of each asset. The inventory and condition assessment process is different for paved road and unpaved roads.

### **Paved Roads**

For paved roads, WCRC uses the Pavement Surface Evaluation and Rating (PASER) system. The PASER system rates paved roadways on a scale of 1 to 10. Roads are then designated into three groups: Good (10-8 rating), Fair (7-5 rating) and Poor (4-1 rating). All paved roads in Washtenaw County are evaluated every two years.

The latest PASER for the roads in Bridgewater Township are shown in the following map.

# Bridgewater Township

## Primary & Local Paved Roads

### PASER RATINGS

PASER stands for Pavement Surface Evaluation and Rating. The PASER rating ranges from 1- failed conditions, to 10 - brand new pavement. A pavement will only be a 10 the first year of its life, the second year it will automatically become a 9. Any condition of 8 or greater is considered to be a good condition; 7, 6 or 5 are fair; 4 or lower is poor.

- PASER based on current ratings and project improvements
- Private and Gravel roads not rated.

### THE RIGHT FIX AT THE RIGHT TIME

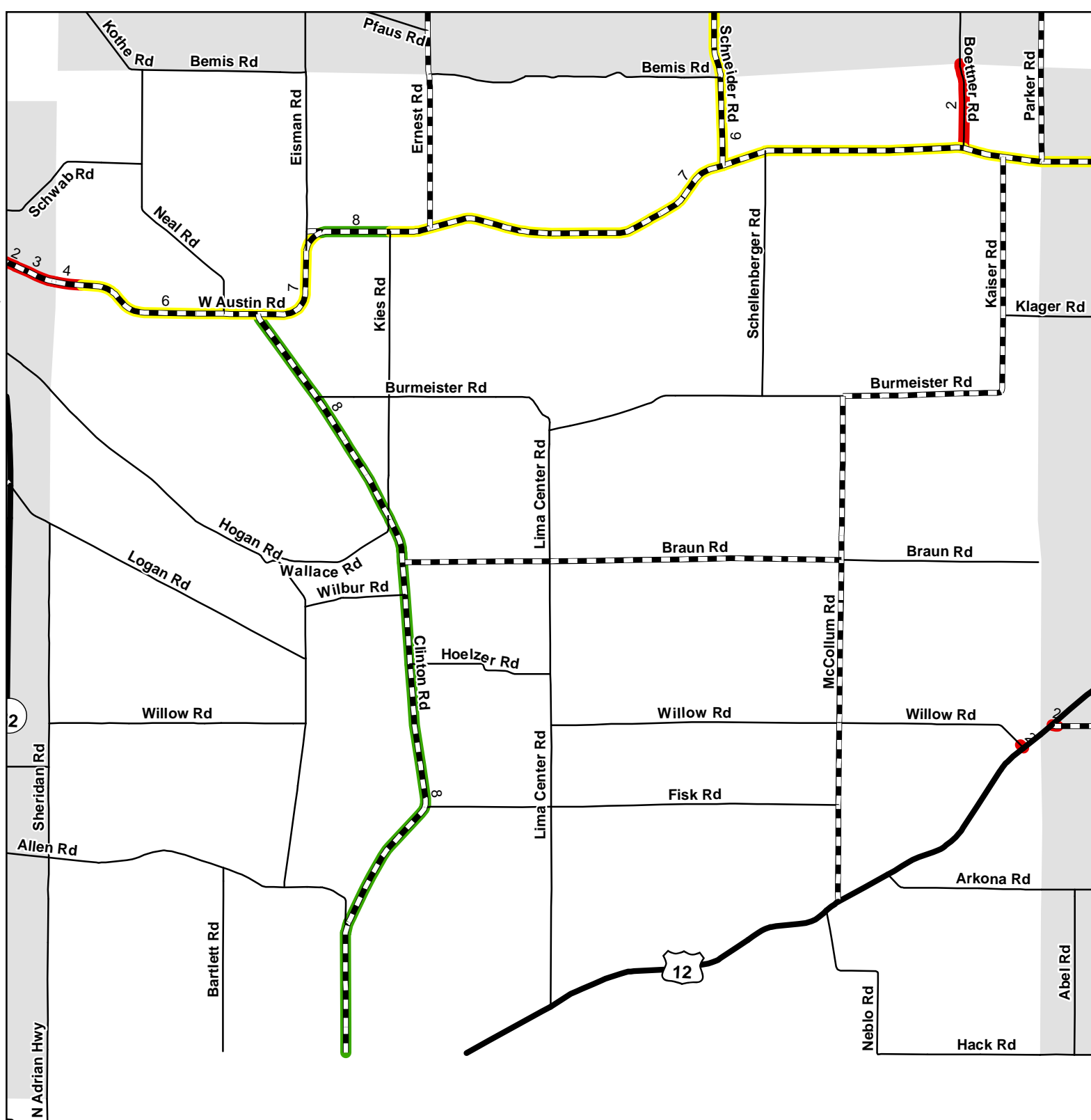
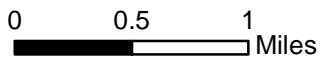
The WCRC determines the best fix to optimize service life for each of our projects. Good pavement management involves less expensive treatments earlier in the life of the pavement in order to take full advantage of infrastructural investments.

**Road Classification**

- State Trunkline
- County Primary
- County Local
- City
- City/Village Boundary

**Road Ratings**

- Good (10, 9, 8)
- Fair (7, 6, 5)
- Poor (4, 3, 2, 1)



## **Unpaved Roads**

Michigan has thousands of miles of unpaved roads, including more than 1,000 miles in Washtenaw County. There is not an official condition rating scale for unpaved road since surface conditions depend so much on the weather. In Washtenaw County, unpaved roads are surfaced with limestone or gravel.

While subjective, each district foreman is highly familiar with the roads in his area and can provide an informal condition rating for each of them based upon the type of material present, drainage facilities and last date of improvements.

## **Bridges and Culverts**

Bridges are structures that span 20' or more. There are 126 bridges on Washtenaw County roads. By law, WCRC inspects bridges at least every two years. Bridges are rated Good, Fair or Poor.

Culverts are structures less than 20' span and vary in description, from a corrugated metal pipe (CMP) to an old-fashioned short-span bridge. There are not any state requirements to inspect culverts but in 2014 WCRC implemented an inspection program for culverts.

These inspections help WCRC staff and townships identify the problems and plan for replacement costs, minimizing surprises. Inspections have also resulted in weight restrictions or culvert closures on primary and local roads for the safety of the traveling public.

WCRC bears all the cost to replace failed structures on primary roads but must partner with the respective township on local roads. To help, the WCRC Board committed to covering 50% of the cost to replace certain culverts on local roads (see page 5 for more information).

See Appendix E for a map showing the latest culvert condition ratings on local collector roads across the county.



## Mix of Fixes

### Paved Roads

PASER can and should be used to make investment decisions on the paved road system. Before any decisions can be made, it is important to understand the various treatments available for paved road maintenance depending on the road condition. The trick is applying the right fix at the right time on the right road. See Appendix F for a flyer summarizing these road treatments.

Pavement Condition (PASER)	Possible Treatment	Estimated Cost per Mile for Two-Lane Road	Estimated Life Expectancy	Who can conduct the work?
Good (10-8 rating)	Crack sealing	\$10,000	Can last up to 3 years	WCRC crews
	Seal coat (chip seal, fog seal)	\$36,500	Can extend the life of a road by 3-5 years	WCRC crews
Fair (7-5 rating)	Seal coat (chip seal, fog seal)	\$36,500	Can extend the life of a road by 3-5 years	WCRC crews
	Mill and resurface	\$180,000	Can extend the life of a road for 5-7+ years (with proper maintenance)	Contractor with WCRC inspection
Poor (4-1 rating)	Pulverize and resurface	\$350,000	Can extend the life of a road for 10-15+ years (with proper maintenance)	Contractor with WCRC inspection
	Reconstruct	\$1,000,000+	Can last up to 15 to 20 years (with proper maintenance)	Contractor with WCRC inspection

On the primary road system, WCRC's strategy is to focus most of the investment on keeping roads already in good condition good and bringing roads up from fair to good. In addition, WCRC strives to fix a few miles of poor roads each year, depending on funding.

*Example:* Primary Road X was rated a 5 in the last round of PASER. This year, WCRC elects to mill and resurface it for \$180,000 per mile bringing it up to a 10 rating. Next year, WCRC plans to apply a seal coat to it (both chip seal and fog seal) for \$36,500 per mile. WCRC will need to seal coat it again in approximately 5 years to keep it in good condition.

On the local road system, the strategy depends on the funding partner, usually the township. WCRC staff are happy to work with each township to develop the best strategy for the local paved road system and the township's budget.

## Unpaved Roads

Similar to paved roads, there is a range of treatment options for unpaved roads and it is important to apply the right fix at the right time.

As a part of WCRC's routine maintenance, every unpaved road in Washtenaw County will be graded a couple times per year and WCRC crews will do limestone/gravel patching as needed.

Just like paved roads, unpaved roads require more than just routine maintenance including ongoing drainage improvements to keep water from standing on the roadway which leads to deterioration of the road. Unpaved roads also require resurfacing which will be gravel or limestone depending upon the type of road.

Any work beyond routine maintenance on local roads comes at the direction and is funded by the township. Funds from the Local Road Matching Program described on page 5 can be used for any of the following treatments.

Possible Treatment	Estimated Cost	Recommended Frequency	Who can conduct the work?
Dust Control (includes a road grading prior to application)	\$.189 per gallon, 1,000 gallons per lane mile	2-3 times per season (May – October)	WCRC crews
Drainage improvements (ditching, berming, tree trimming)	Varies significantly by project		WCRC crews
Resurfacing (with either limestone or gravel)	Typically, \$65-\$85k per mile	Should be done every 8 – 10 years	WCRC crews
Paving an unpaved road <sup>2</sup>	\$1.5 million+ per mile		Contractor with WCRC inspection

## Bridges and Culverts

There are fewer options available on bridges and culverts to help extend the life of the structure. WCRC will often invest money to rehabilitate or preserve a bridge deck or substructure. Some culverts can be lined to help extend their life. Most often, investments in culverts, especially those on local roads, are for a full replacement after the condition has deteriorated significantly.

<sup>2</sup> It should be noted, especially when considering whether to pave local unpaved roads, many residents have expressed strong feelings against paving the road they live on, while other residents and drivers expect the road to be paved.

## **Project Selection**

As shown in the charts above, there are more options for investing in the local road system than the funding available. To help prioritize where to invest each year, WCRC staff work with township officials to create an annual proposed local road improvement program with project estimates. These discussions typically start in late-fall and carry on throughout the winter. Final project agreements are created in mid to late spring. The full conditions of the Local Road Matching Program can be found in Appendix B.

See Appendix G for a summary of needs on local paved and unpaved roads, by township.

## **Funding Options for Townships**

Townships are not legally required to contribute to the maintenance, construction or reconstruction of county roads. However, Act 51 does restrict how much state funding a road commission can spend on local county road construction. In addition, road commissions do not have taxing authority, so their funding sources are limited.

WCRC is limited to no more than 50% of the local road project's total cost. The other 50% of a project's cost must come from a "local source" – which usually takes the form of a township contribution. In addition, WCRC has a limited budget just like most organizations so the amount WCRC contributes to local road projects is capped at the amounts set forth in the Local Road Matching Program.

Washtenaw County is not alone in its challenges securing much needed local road funding. Looking beyond county lines, we see townships throughout Michigan turning to other taxing mechanisms to generate the revenue necessary to repair and maintain local roads.

Whereas WCRC does not have any legal taxing authority, townships have three options to help raise revenue to fund road improvements: a millage through Act 51, a township-wide millage or a special assessment district.

### **Act 51 Millage**

Act 51 of 1951 outlines two options for townships to raise revenue for the maintenance and improvement of local roads.

1. Township boards can levy a property tax of no more than three mills in any year, without a vote of the people, for the maintenance or improvement of county roads within the township.
2. With voter approval, township boards may levy a property tax of no more than 6 mills in any year for the maintenance or improvement of county roads within the township.

## **Township-Wide Millage**

Section 6 of Article IX of the Constitution of Michigan of 1963 authorizes townships to levy millages with a majority vote of the people.

In 2016, Ypsilanti Charter Township used this option to place Proposition C on the ballot to fund recreation, bike paths, sidewalks, roads, parks and general operating purposes. The measure passed with 58% of the vote.

See Appendix H for taxable values with various millage scenarios, by township.

## **Special Assessment Districts (Township-wide or Neighborhood-to-Neighborhood)**

Public Act 188 of 1954 allows townships to pay for road improvements through a special assessment district (SAD). A SAD is an area where the majority of property owners agree to allow a government agency to levy a property tax in exchange for a specific service such as road improvements. The area can be limited to a neighborhood or can be township wide. Act 188 outlines the process for levying a SAD.

In 2013, Scio Township's Board approved a township-wide SAD which raises approximately \$500,000 annually for ten years and funds improvements on local roads in the township. Several other townships in Michigan have taken this approach for township-wide improvements.

In Washtenaw County, Dexter, York, Lodi and Scio Townships have also approved neighborhood SAD projects, which are generally initiated by neighbors in a specific subdivision requesting road improvements within their neighborhood.

See Appendix I for a summary of revenue that could be generated through various rates of a township-wide SAD, by township.

## Appendix A: Public Road Miles Chart, By Township

Townships	Primary Paved	Primary Unpaved	Primary Bridges	Primary Culverts	Local Paved	Local Unpaved	Local Bridges	Local Culverts
Ann Arbor	22.56	0.00	2	8	5.68	14.08	3	7
Augusta	28.98	2.49	2	19	9.24	48.33	13	22
Bridgewater	12.24	9.16	1	6	0.00	40.23	3	6
Dexter	25.85	3.75	0	2	13.14	25.99	3	2
Freedom	11.92	4.47	0	2	1.68	46.27	0	5
Lima	19.44	5.75	3	6	5.45	40.45	13	7
Lodi	18.85	2.53	0	8	13.36	42.35	5	18
Lyndon	14.42	3.62	0	0	0.58	37.35	1	1
Manchester	10.80	8.81	1	1	1.20	46.41	1	8
Northfield	25.81	4.64	2	8	11.35	47.36	2	8
Pittsfield	42.80	0.00	0	11	81.82	14.73	0	8
Salem	34.25	0.94	0	11	7.5	33.6	1	17
Saline	12.21	11.65	1	9	1.97	27.96	3	11
Scio	48.98	0.00	12	9	28.30	30.96	8	10
Sharon	10.18	11.00	2	1	0.25	34.69	3	2
Superior	32.90	0.00	5	14	32.33	29.13	2	12
Sylvan	17.57	0.44	1	7	15.00	26.5	3	6
Webster	22.81	4.70	2	4	1.27	41.82	1	11
York	41.96	3.89	6	20	28.44	27.17	4	15
Ypsilanti	60.21	0.00	8	8	135.36	9.93	2	9
<b>Totals</b>	<b>514.74</b>	<b>77.84</b>	<b>48</b>	<b>154</b>	<b>393.87</b>	<b>665.31</b>	<b>71</b>	<b>185</b>

## Appendix B: Local Road Matching Program Conditions

### *Township Assistance*

In order to allow local road improvements to proceed in a timely manner, townships are asked to assist WCRC staff in acquiring necessary tree removal and grading permits, holding public meetings and coordinating any necessary property owner contacts.

### *Project Overruns*

WCRC staff will provide an estimated cost for each individual project to be included within the agreement between the township and WCRC. If, prior to beginning an individual project, it is determined that the original cost estimate will not cover project costs, WCRC will notify the township to determine if the township desires to proceed with the project with a reduced scope of work or an additional funding commitment.

Budgets are closely monitored on each project and every effort is made to avoid overruns. Any unexpected project cost overrun shall be taken from any unexpended funds remaining in that township's total township agreement. If the overrun exceeds the total township agreement, WCRC may bill the township up to an additional 10% of the total agreement amount with the township. At the township's option, such overruns can be taken from the following years' matching funds.

### *Billing Procedures*

The following billing methods apply only to those projects considered to be construction and heavy maintenance. Dust control will be billed at cost-to-date at time of billing. Standard fringe and overhead rates will be applied as defined by PA 51 of 1951, as amended.

- First Billing: The first 40% of the total Matching Program for construction and heavy maintenance projects will be due in June or 30 days from receipt of the first invoice.
- Second Billing: The second 40% will be due in August or 30 days from receipt of the second invoice.
- Final Billing: A final billing will be due in December or 30 days from receipt of final invoice.

Any credits due townships will be returned at the time of final billing or credited to the following year, as determined by the township.

### *Primary Road Matching*

Any township board may, at its option, request that a part or all of its allocated matching WCRC funds, along with an equal amount of township funds, be used on a primary road project within the township boundaries.

### *Reallocation of Funds*

Any township that has not notified WCRC of its intent to use matching funds on or before Friday, May 21, 2021 will forfeit the allocated matching money. WCRC will determine the amount of unused matching funds and reallocate these funds to primary road maintenance.

### *Dust Control*

Conventional matching funds can be used for dust control only for solid applications (spot or skip spraying is ineligible). Application rates and frequency will be subject to limits established by EGLE rules (Reference: State of Michigan EGLE Groundwater Discharge Permit, General Permit No. GW1550000, Rule 2215, effective April 1, 2020, expiration April 1, 2023)

### *Local Matching Fund Carryover*

If a township determines that it desires to carry over the funds allocated for a given year into the following year, the township must provide written notification to WCRC that it is requesting this carryover, and identify an eligible project for which the funds will be held.

The carryover fund will be preserved by WCRC for one year. Beyond this point, the funds will be reallocated to primary road maintenance. The carryover option allows the township to accumulate the funds that are allocated with the previous year allocation; in other words, the carryover funds cannot exceed the previous year's allocation.

## Appendix C: 2021 Local Road Matching Funds, By Township

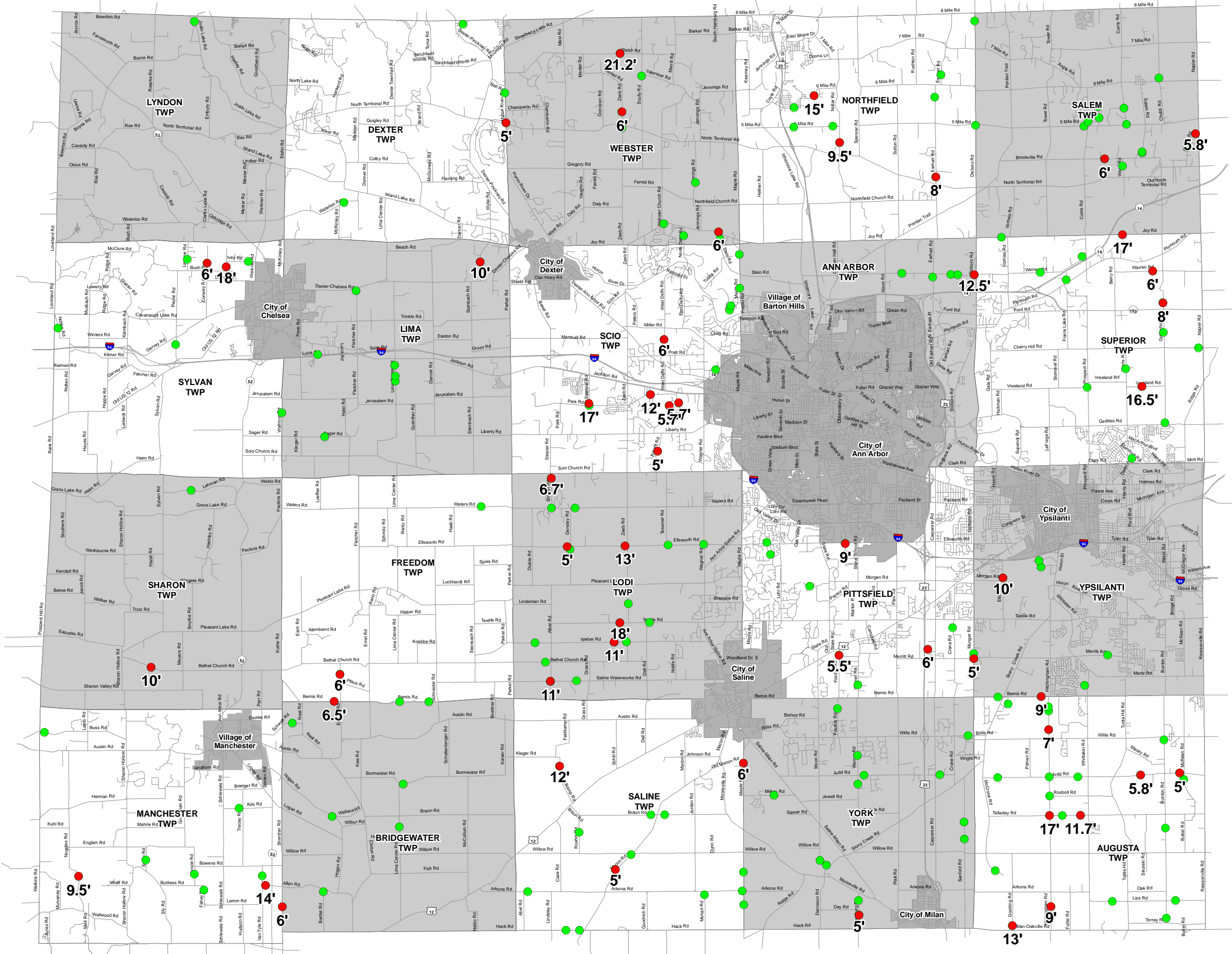
Township	2021 Conventional Local Road Matching Program	2020 Conventional Local Road Matching Program	2021 Drainage Matching Program	2020 Drainage Matching Program
Ann Arbor	\$23,270	\$23,275	\$3,782	\$3,782
Augusta	48,679	48,695	14,652	14,652
Bridgewater	25,889	25,900	11,526	11,526
Dexter	35,250	35,260	7,008	7,008
Freedom	29,871	29,884	13,618	13,618
Lima	33,985	33,998	12,804	12,804
Lodi	49,762	49,778	12,664	12,664
Lyndon	26,393	26,403	10,629	10,629
Manchester	31,501	31,514	13,091	13,091
Northfield	54,999	55,015	13,847	13,847
Pittsfield	151,176	151,202	4,894	4,894
Salem	36,129	36,140	10,535	10,535
Saline	21,203	20,920	8,217	8,217
Scio	82,305	82,322	7,131	7,131
Sharon	22,976	22,986	9,939	9,939
Superior	69,111	69,128	9,753	9,753
Sylvan	29,236	29,247	11,096	11,096
Webster	38,665	38,676	11,787	11,787
York	60,022	60,038	8,615	8,615
Ypsilanti	229,578	229,618	4,412	4,412
<b>Totals</b>	<b>\$1,100,000</b>	<b>\$1,100,000</b>	<b>\$200,000</b>	<b>\$200,000</b>



## Appendix D: Township Contribution Summary, 2017 – 2020

This chart includes all contributions made by a township to WCRC including local road investments, non-motorized improvements, bond payments, primary road investments by a township, etc.

Township	2017	2018	2019	2020	4-Year Average
Ann Arbor	\$655,070	\$92,109	\$232,862	\$240,137	\$305,044
Augusta	120,462	161,503	145,470	277,080	176,129
Bridgewater	28,245	12,543	64,606	16,831	30,556
Dexter	22,346	197,973	150,361	96,797	116,869
Freedom	28,315	44,258	39,090	44,743	39,102
Lima	207,502	236,477	171,533	206,634	205,536
Lodi	339,568	231,286	196,082	117,308	221,061
Lyndon	32,588	22,550	32,872	17,424	26,359
Manchester	124,690	105,580	38,747	31,502	75,130
Northfield	107,816	96,714	91,657	74,283	92,618
Pittsfield	959,392	659,425	2,601,981	994,362	1,303,790
Salem	573,943	483,407	3,283,602	1,740,718	1,520,418
Saline	136,294	133,371	149,038	557,529	244,058
Scio	225,961	14,957	20,383	501,479	190,695
Sharon	28,926	49,782	98,669	54,138	57,879
Superior	411,799	141,438	168,491	65,626	196,839
Sylvan	81,838	72,370	26,115	114,611	73,734
Webster	368,739	150,531	198,297	38,428	188,999
York	146,686	465,358	205,542	375,053	298,160
Ypsilanti	941,218	1,214,181	1,147,958	809,371	1,028,182
<b>Totals</b>	<b>\$5,541,399</b>	<b>\$4,585,814</b>	<b>\$9,063,358</b>	<b>\$6,374,053</b>	<b>\$6,391,156</b>



**Local Collector Road Culverts**  
5' to 20'

- Fair to Good Condition
- Poor Condition

Note: Does not include bridges on local roads that are 20' and greater in span.

# The Life of a Road

Preserving our investments with preventative maintenance



Road work is an expensive endeavor. The Washtenaw County Road Commission (WCRC) works very hard to apply the principles of asset management with the available preventative maintenance tools to maintain the more than 1,600 miles of road under WCRC's jurisdiction. Check out the graphic below to get an idea of when each tool is the best option, depending on the road condition and budget constraints.

## Crack Seal

**Estimated Cost\*:** \$10,000 per mile

**Impact:** Can last up to 3 years

**What:** Fills cracks (less than 3/4" wide) with asphalt sealant. Seals pavement from water and debris.

**When:** The best time to crack seal is when cracks start to develop and are still relatively small.

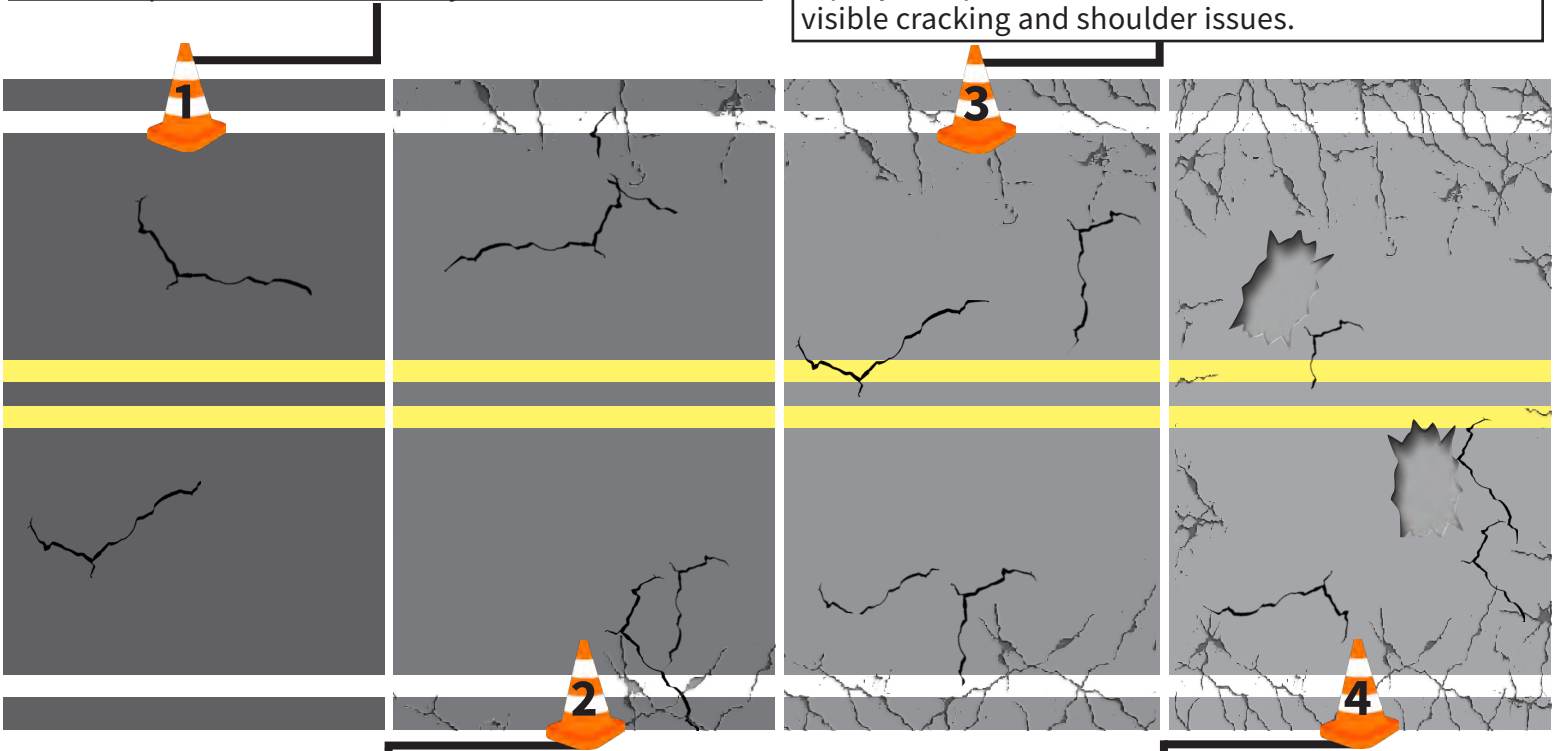
## Mill and Overlay

**Estimated Cost\*:** \$180,000 per mile

**Impact:** Can extend the road life by 5 to 7+ years

**What:** One layer of existing asphalt is removed and the road is resurfaced with a new layer of asphalt.

**When:** The best time to mill and overlay is when the top layer of pavement has started to deteriorate with visible cracking and shoulder issues.



## Seal Coat (Chip Seal and Fog Seal)

**Estimated Cost\*:** \$23,000 - \$37,000 per mile

**Impact:** Can extend the road life by 3 to 5 years

**What:** Thin layer of liquid asphalt that seals pavement from water, sunshine and debris.

**When:** The best time for seal coat is when the road is still in good or fair condition with slight cracking starting to show. WCRC is working to seal coat new pavement within a year or two after it has been placed to extend the pavement life.

## Pulverize and Resurface

**Estimated Cost\*:** \$350,000 per mile

**Impact:** Can extend the road life by 10 to 15+ years

**What:** A pulverizer, capable of breaking up 6 to 10" of existing asphalt and aggregate base, recycles and compacts the pulverized asphalt to create a new road base, and then covers it with two layers of new asphalt.

**When:** This is one of the last options due to cost. It is used when the road is in very poor condition with large potholes and heavy cracking.

*\*Estimated costs are based on 2020 prices for two-lane roads*

## Questions? Contact WCRC

(734) 761-1500

[wcroads.org](http://wcroads.org)

Facebook/Twitter @WashtenawRoads

## Appendix G: Summary of Local Road Needs, By Township

Township	Total Needs for Local Paved Roads	Total Needs for Local Unpaved Roads	Total Needs for Local Roads	Average 10-year Annual Expenditure Needed for Local Roads
Ann Arbor	\$1,243,020	\$1,050,200	\$2,293,220	\$229,322
Augusta	1,330,925	3,830,000	5,160,925	516,093
Bridgewater	164,100	3,244,000	3,408,100	340,810
Dexter	2,230,537	2,040,000	4,270,537	427,054
Freedom	31,800	3,701,600	3,733,400	373,340
Lima	923,980	3,236,000	4,159,980	415,998
Lodi	1,851,472	3,376,000	5,227,472	522,747
Lyndon	41,040	2,946,200	2,987,240	298,724
Manchester	103,020	3,695,200	3,798,220	379,822
Northfield	2,123,773	3,728,200	5,851,973	585,197
Pittsfield	11,312,583	1,133,600	12,446,183	1,244,618
Salem	595,755	2,671,000	3,266,755	326,676
Saline	47,100	2,231,200	2,278,300	227,830
Scio	3,667,244	2,323,200	5,990,444	599,044
Sharon	-	2,775,200	2,775,200	277,520
Superior	4,856,748	2,321,000	7,177,748	717,775
Sylvan	3,110,287	2,091,800	5,202,087	520,209
Webster	336,000	3,302,400	3,638,400	363,840
York	4,271,450	2,139,400	6,410,850	641,085
Ypsilanti	19,754,478	785,000	20,539,478	2,053,948
<b>Totals</b>	<b>\$57,995,312</b>	<b>\$52,621,200</b>	<b>\$110,616,512</b>	<b>\$27,654,128</b>

## Appendix H: Taxable Valuation Data, By Township

Township	2020 Taxable Value	Millage Amount			
		0.50	1.00	2.00	3.00
Ann Arbor	\$ 583,474,104	\$ 291,737	\$ 583,474	\$ 1,166,948	\$ 1,750,422
Augusta	268,596,530	134,298	268,597	537,193	805,790
Bridgewater	101,525,151	50,763	101,525	203,050	304,575
Dexter	428,676,267	214,338	428,676	857,353	1,286,029
Freedom	189,508,679	94,754	189,509	379,017	568,526
Lima	259,158,320	129,579	259,158	518,317	777,475
Lodi	479,585,000	239,793	479,585	959,170	1,438,755
Lyndon	175,367,181	87,684	175,367	350,734	526,102
Manchester	211,794,990	105,897	211,795	423,590	635,385
Northfield	383,106,394	191,553	383,106	766,213	1,149,319
Pittsfield	2,129,914,501	1,064,957	2,129,915	4,259,829	6,389,744
Salem	409,111,740	204,556	409,112	818,223	1,227,335
Saline	114,631,532	57,316	114,632	229,263	343,895
Scio	1,405,441,247	702,721	1,405,441	2,810,882	4,216,324
Sharon	104,530,547	52,265	104,531	209,061	313,592
Superior	693,099,985	346,550	693,100	1,386,200	2,079,300
Sylvan	215,800,401	107,900	215,800	431,601	647,401
Webster	458,544,108	229,272	458,544	917,088	1,375,632
York	451,107,630	225,554	451,108	902,215	1,353,323
Ypsilanti	1,448,398,858	724,199	1,448,399	2,896,798	4,345,197
<b>Totals</b>	<b>\$10,511,373,165</b>	<b>\$ 5,255,687</b>	<b>\$ 10,511,374</b>	<b>\$ 21,022,748</b>	<b>\$ 31,534,122</b>

## Appendix I: Summary of Revenue Generated with a Township-Wide Special Assessment District (SAD), By Township

Township	Parcel Count (2020)	Revenue at \$60/parcel	Revenue at \$70/parcel	Revenue at \$80/parcel	Revenue at \$90/parcel
Ann Arbor	2,059	\$123,540	\$144,130	\$164,720	\$185,310
Augusta	3,576	214,560	250,320	286,080	321,840
Bridgewater	1,155	69,300	80,850	92,400	103,950
Dexter	3,621	217,260	253,470	289,680	325,890
Freedom	1,222	73,320	85,540	97,760	109,980
Lima	1,931	115,860	135,170	154,480	173,790
Lodi	2,688	161,280	188,160	215,040	241,920
Lyndon	1,676	100,560	117,320	134,080	150,840
Manchester	3,021	181,260	211,470	241,680	271,890
Northfield	4,622	277,320	323,540	369,760	415,980
Pittsfield	13,052	783,120	913,640	1,044,160	1,174,680
Salem	3,486	209,160	244,020	278,880	313,740
Saline	1,392	83,520	97,440	111,360	125,280
Scio	7,654	459,240	535,780	612,320	688,860
Sharon	1,178	70,680	82,460	94,240	106,020
Superior	6,016	360,960	421,120	481,280	541,440
Sylvan	1,952	117,120	136,640	156,160	175,680
Webster	3,057	183,420	213,990	244,560	275,130
York	3,234	194,040	226,380	258,720	291,060
Ypsilanti	19,776	1,186,560	1,384,320	1,582,080	1,779,840
<b>Totals</b>	<b>86,368</b>	<b>\$5,182,080</b>	<b>\$6,045,760</b>	<b>\$6,909,440</b>	<b>\$7,773,120</b>

# Transportation Asset Management for Local Officials

## Everything you need to know about managing local roads

Each of us applies the basic principles of asset management every day to manage decisions relating to our businesses, homes, automobiles, and personal possessions. In the Introduction to Transportation Asset Management workshop, we will address asset management issues faced specifically by elected officials, who make decisions about roads for cities, townships, and counties. No engineering background is necessary. This workshop will provide an introduction to several core components:

- The importance of asset management—roads included
- Overview of transportation asset management principles
- Pavement deterioration basics—stay ahead of the curve
- Preventive maintenance for roads—a mix of fixes
- Selecting projects to maximize return on investment—the right treatment
- Lowering costs by using an asset management plan



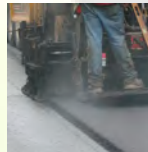
Crush and Shape



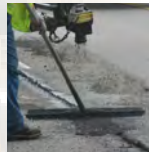
Slurry Seal



Crack Seal



Mill and Overlay



Durapatch



Chip Seal

VIRTUAL EVENT:

**Tuesday, March 30, 2021**

9:00 a.m. – 12:00 noon ET

### Registration\*

No fee to attend. The Michigan Transportation Asset Management Council (TAMC) sponsors this session.

Register at: <http://ctt.nonprofitsoapbox.com/2021tamlo-0330>  
Questions? E-mail [ctt@mtu.edu](mailto:ctt@mtu.edu)

\* Required for fulfillment of continuing education (Center for Technology & Training policy: [ctt.mtu.edu/ContinuingEducation](http://ctt.mtu.edu/ContinuingEducation)). No-shows/cancellations within three business days of the event are charged the full registration fee; substitutions accepted. Accommodation requests related to a disability should be made by ten business days prior to the event to [ctt@mtu.edu](mailto:ctt@mtu.edu). Michigan Technological University is an Equal Opportunity Educational Institution/Equal Opportunity Employer that provides equal opportunity for all, including protected veterans and individuals with disabilities.

### Instructors (CTT Staff)

Pete Torola, PE, Research Engineer II • Andy Manty, PE, Research Engineer



Michigan  
Transportation Asset  
Management Council



Center for  
**Technology & Training**

## 2021 BRIDGEWATER TOWNSHIP AGREEMENT

THIS AGREEMENT, made and entered into this \_\_\_\_ day of \_\_\_\_\_, 2021, by and between the Township Board of Bridgewater Township, Washtenaw County, parties of the first part and the Board of Washtenaw County Road Commissioners, parties of the second part.

WHEREAS, the parties of the first part desire that certain improvements be made upon the local roads in the Township of Bridgewater, and

WHEREAS, proper authority is provided to the parties of the agreement under the provisions in Act 51 of Public Acts of 1951 as amended,

IT IS NOW THEREFORE AGREED, the parties of the second part will accomplish the improvements as specified herein, all in accordance with the standards of the parties of the second part.

1. **Dust Control (497-17-108):**

Work to include placement of two (2) solid applications of contract brine on all certified local gravel/limestone roads within the township, including an additional third pass on Kies Road between Austin Road and Clinton Road and on Allen Road between Hogan Road and Clinton Road. Estimated 171,440 gallons @ \$0.189 per gallon.

Estimated cost of contract brine: \$ 32,402.16

2. **Hack Road, Neblo Road to Saline Twp line:**

Work to include tree cutting, roadside berm removal, ditching, shaping the existing surface, the application of 6" (C.I.P.) of 22a limestone (approximately 5,450 tons) with associated dust control and project restoration.

Estimated project cost: \$ 62,300.00

3. **Fisk Road, Lima Center Road to McCollum Road:**

Work to include tree cutting, roadside berm removal, ditching, shaping the existing surface, the application of 6" (C.I.P.) of 22a gravel (approximately 6,350 tons) with associated dust control and project restoration.

Estimated project cost: \$ 130,300.00

4. **Willow Road, Hogan Road to Sheridan Road:**

Work to include shaping the existing surface, the application of 6" (C.I.P.) of 23a limestone (approximately 5,800 tons) with associated dust control and project restoration.

Estimated project cost: \$ 118,000.00

5. **Logan Road, Sheridan Road to Hogan Road:**

Work to include shaping the existing surface, the application of 6" (C.I.P.) of 23a limestone (approximately 6,500 tons) with associated dust control and project restoration.

Estimated project cost: \$ 132,200.00



6. **Hogan Road, Allen Road to Willow Road:**  
Work to include tree cutting, roadside berm removal, ditching, shaping the existing surface, the application of 8" (C.I.P.) of 23a limestone (approximately 7,450 tons) with associated dust control and project restoration.  
Estimated project cost: \$ 180,700.00

---

**AGREEMENT SUMMARY**

2021 LOCAL ROAD PROGRAM	
Dust Control	\$ 32,402.16
Hack Road, Neblo Road to Saline Twp line	\$ 62,300.00
Fisk Road, Lima Center Road to McCollum Road	\$ 130,300.00
Willow Road, Hogan Road to Sheridan Road	\$ 118,000.00
Logan Road, Sheridan Road to Hogan Road	\$ 132,200.00
Hogan Road, Allen Road to Willow Road	<u>\$ 180,700.00</u>
Subtotal	<u>\$ 655,902.16</u>
Less WCRC 2021 Conventional Matching Funds	\$ 25,889.00
Less WCRC 2020 Conventional Matching Funds (carryover)	\$ 10,923.07
Less WCRC 2021 Drainage Matching Funds	\$ 11,526.00
Less WCRC 2020 Drainage Matching Funds (carryover)	\$ 6,826.93
ESTIMATED AMOUNT TO BE PAID BY BRIDGEWATER TOWNSHIP UNDER THIS AGREEMENT DURING 2021:	<u><b>\$ 600,737.16</b></u>

**FOR BRIDGEWATER TOWNSHIP:**

\_\_\_\_\_  
Laurie Fromhart, Supervisor

\_\_\_\_\_  
Witness

\_\_\_\_\_  
Tom Wharam, Clerk

\_\_\_\_\_  
Witness

**FOR WASHTENAW COUNTY ROAD COMMISSION:**

\_\_\_\_\_  
Barbara Ryan Fuller, Chair

\_\_\_\_\_  
Witness

\_\_\_\_\_  
Sheryl Soderholm Siddall, Managing Director

\_\_\_\_\_  
Witness





## Township Insights 3.12.2021 | Weekly legislative and news update from the Michigan Townships Association

From: Michigan Townships Association (jenn@michigantownships.org)

To: bridgewaterwpsupervisor@yahoo.com

Date: Friday, March 12, 2021, 06:49 PM EST

# Michigan Township **INSIGHTS**

Weekly News and Information from the Michigan Townships Association | March 12, 2021

### American Rescue Plan Act to provide aid to local governments

Local units of government and the state will receive \$10.3 billion with the final passage and enactment of the American Rescue Plan Act. Municipalities are expected to receive \$1.8 billion in federal recovery funds and counties \$1.9 billion, providing direct aid to mitigate the fiscal impacts of the COVID-19 pandemic and provide vital services. Under the measure, the U.S. Department of the Treasury has 60 days to distribute 50% of the majority of funds to states and local units—with larger municipalities receiving direct payments. The state will distribute funds to all other municipalities within 30 days of receiving a payment from the federal department, with extensions permitted. The remaining 50% will be allocated one year later. The allocation of funds will be determined on relative population counts with a maximum based on 75% of the local government's budget as of Jan. 27, 2020 (pre-pandemic annual budget).

Local governments can use the funds to cover costs incurred through Dec. 31, 2024, for the following purposes:

- Respond to the COVID-19 emergency and address its negative economic impacts
- Provide premium pay up to \$13 an hour or \$25,000 per worker in additional wages for workers performing an essential function in the pandemic
- Provide government services affected by a revenue reduction during the pandemic (relative to revenues collected by the local government in the most recent full fiscal year prior to the emergency)
- Investments in water, sewer and broadband infrastructure

MTA is providing Michigan's estimated [allocations](#), but **please NOTE the allocation for your township may include the allocation for a village, if one exists within your jurisdiction AND the final formula allocations will be developed by the U.S. Department of**

**Mika Meyers** PLC  
Attorneys at Law

**Township and Public Law  
Powered by Experience**

[LEARN MORE](#)

Grand Rapids | Caledonia | Rockford | Manistee | Michigan  
(616) 632-8000



**MTA**

#### **ONLINE**

lets your *entire township* get the education you need, anytime, anywhere, at your convenience.

*MTA's Online Learning Center is brought to you in part by [Michigan CLASS](#)*



**the Treasury.** Additionally, there are several outstanding questions that may be answered in forthcoming guidance by the U.S. Treasury Department. MTA will provide additional information and clarification as soon as it becomes available.

## State announces broad expansion for COVID-19 vaccine eligibility

Every person age 16 and older in the state will be eligible to receive a COVID-19 vaccine starting April 5, according to an [announcement from the state](#) today. In addition, the previously announced eligibility starting March 22 has also been expanded to all Michiganders age 50 and up, and those age 16 and up with disabilities and medical conditions that put them at high risk of negative COVID-19 outcome. Starting this past Monday, March 8, eligibility was opened up to Michiganders age 50 and older with medical conditions or disabilities, and caregiver family members and guardians who care for children with special health care needs. Providers are still encouraged to schedule appointments and allocate vaccinations to residents based on highest risk, including older residents, essential workers and frontline workers. State officials told the Protect Michigan Commission, of which MTA is a member, that it is important to remember that it will take weeks or likely several months to vaccinate everyone who is eligible and wants to get a vaccine. The state also announced today a federal eight-week regional mass vaccination site—one of only a few in the country—at Ford Field in Detroit.



Share information with your residents on how they can make appointments:

- Check the website of the local health department or hospital to find out their process or for registration forms (links are also available at [the state's COVID-19 vaccine webpage](#))
- Check additional vaccination sites, such as local pharmacies like Meijer, Rite Aid or Cardinal Health (U.P. residents)
- Call 2-1-1 or the COVID-19 Hotline, 888-535-6136 (press 1)

## Bill to provide speed limit flexibility reported

Townships and other local units would have greater flexibility in setting speed limits under MTA-supported legislation reported this week by the House Transportation Committee. [House Bill 4014](#), sponsored by Rep. Bradley Slagh (R-Zeeland Chtr. Twp.), is intended to clarify situations for local units of government to set speed limits based on the 85th percentile of free-flowing traffic and allow traffic engineering practices that provide an objective analysis of the characteristics of the highway to be considered. It would also allow additional flexibility in setting speed limits by rounding to a multiple that is within five miles per hour of the 85th percentile speed. The bill would retain the ability of townships to set speed limits between the 85th percentile—the speed vehicles

You've inspired us over the past year; **let us inspire you.** Join us for MTA's [2021 Virtual Conference & Expo](#), April 19-21. **Registration is NOW open!**

Invest for **success.**

Invest for the **future.**

Invest for your **township.**



Any financial and/or investment decision should be made only after considerable research, consultation, and investment with an experienced professional advisor for the specific purpose. Past performance is not an indication of future performance. Any financial and/or investment decision may incur losses.

## Upcoming Training Opportunities

- \*\* [MTA 2021 Virtual Conference & Expo](#)
- \*\* [OMA is Here to Stay](#)

## MTA QUICK LINKS

[MTA Coronavirus Webpage](#)  
[Members-only Website](#)  
[Answer Center](#)  
[Training](#)  
[Advocacy](#)  
[Classifieds](#)  
[Community Connection](#)  
[Webcasts](#)  
[Store](#)  
[Township Governance Academy](#)  
[Allied Service Providers](#)  
[NATaT](#)

## ALLIED SERVICE PROVIDERS



<b>Unit</b>	<b>County</b>	<b>State</b>	<b>Allocation</b>
Blackman charter township	Jackson County	Michigan	2.32
Blaine township	Benzie County	Michigan	0.06
Blair township	Grand Traverse County	Michigan	0.90
Blendon township	Ottawa County	Michigan	0.67
Bliss township	Emmet County	Michigan	0.06
Blissfield township	Lenawee County	Michigan	0.38
Bloomer township	Montcalm County	Michigan	0.37
Bloomfield Hills city	Oakland County	Michigan	0.39
Bloomfield Charter township	Oakland County	Michigan	4.14
Bloomfield township	Huron County	Michigan	0.04
Bloomfield township	Missaukee County	Michigan	0.05
Bloomington township	Van Buren County	Michigan	0.30
Blue Lake township	Muskegon County	Michigan	0.24
Blue Lake township	Kalkaska County	Michigan	0.04
Blumfield township	Saginaw County	Michigan	0.18
Boardman township	Kalkaska County	Michigan	0.16
Bohemia township	Ontonagon County	Michigan	0.01
Bois Blanc township	Mackinac County	Michigan	0.01
Boon township	Wexford County	Michigan	0.07
Boston township	Ionia County	Michigan	0.57
Bourret township	Gladwin County	Michigan	0.05
Bowne township	Kent County	Michigan	0.34
Boyne City city	Charlevoix County	Michigan	0.37
Boyne Valley township	Charlevoix County	Michigan	0.12
Brady township	Kalamazoo County	Michigan	0.45
Brady township	Saginaw County	Michigan	0.21
Brampton township	Delta County	Michigan	0.10
Branch township	Mason County	Michigan	0.13
Brandon charter township	Oakland County	Michigan	1.59
Brant township	Saginaw County	Michigan	0.19
Breen township	Dickinson County	Michigan	0.05
Breitung charter township	Dickinson County	Michigan	0.56
Brevort township	Mackinac County	Michigan	0.06
Bridgehampton township	Sanilac County	Michigan	0.08
Bridgeport charter township	Saginaw County	Michigan	0.97
Bridgeton township	Newaygo County	Michigan	0.21
Bridgewater township	Washtenaw County	Michigan	0.17
Bridgman city	Berrien County	Michigan	0.22
Brighton city	Livingston County	Michigan	0.76
Brighton township	Livingston County	Michigan	1.86
Briley township	Montmorency County	Michigan	0.18
Brockway township	St. Clair County	Michigan	0.19
Bronson city	Branch County	Michigan	0.23
Bronson township	Branch County	Michigan	0.13
Brookfield township	Huron County	Michigan	0.07
Brookfield township	Eaton County	Michigan	0.15
Brooks township	Newaygo County	Michigan	0.35
Broomfield township	Isabella County	Michigan	0.18
Brown City city	Lapeer County	Michigan	0.00
Brown City city	Sanilac County	Michigan	0.12
Brown township	Manistee County	Michigan	0.07

Washtenaw County Sheriff's Office. Township agrees that the Washtenaw County Parks and Recreation staff shall inspect the property no less than one (1) time per week and at such times they will inspect the property to insure compliance with the provisions of this First Amended Consent Judgment.

13. Preserve hours shall be designated as dawn to dusk and use of the Preserve during any other time will be prohibited.

14. The County agrees that when considering other parcels of land in Bridgewater Township for inclusion in the Natural Area Preservation Program to provide 90 days notice to Township prior to purchasing any such parcels. Township shall thereafter have 30 days to provide written objections, suggestions or comments regarding the proposed purchase and the County shall respond in writing to Township's concerns and a representative of the County shall appear in person before a meeting of the Township Board to discuss these concerns. County shall consider (but not be bound by) any input, areas of concern, or other information which Township believes should be considered by the County before proceeding to acquire such parcels.

15. Use of the Preserve shall be limited to passive recreation as contemplated by the Natural Area Preservation Program ("NAPP"), Ordinance No. 128 as adopted by the Washtenaw County Board of Commissioners and the Bridgewater Township Conservation Preservation District Ordinance as amended December 3, 2009. Copies of the applicable NAPP and the Bridgewater Township Conservation District Ordinance are attached hereto as Exhibits F and G respectively and made a part of this First Amended Consent Judgment.

16. In the event County abandons the use of the Griewahn Parcel as a nature preserve or transfers ownership of the parcel, this First Amended Consent Judgment shall be null and void as to the Griewahn Parcel and that property shall only be used in a manner that conforms to the



## BOARD OF COMMISSIONERS

220 N Main St | Ann Arbor, MI | 48104

**IMMEDIATE RELEASE | March 16th, 2021**

Contact: Peter Lindeman | [lindemanp@washtenaw.org](mailto:lindemanp@washtenaw.org) | 734-417-4021

## **Washtenaw County Board of Commissioners Approve Special Revenue Fund to Maintain County Trails**

**Washtenaw County, MI** – At their meeting earlier this month, the Board of Commissioners approved the creation of a new special revenue fund to support the long-term maintenance of non-motorized trails in Washtenaw County. The resolution, brought by the Washtenaw County Parks and Recreation Commission in partnership with the Washtenaw County Treasurer, passed unanimously.

"The beauty of the trails in Washtenaw County is amazing," said Ricky Jefferson, Washtenaw County Commissioner for District 6 and member of the Washtenaw Parks and Recreation Commission. "As I've explored the trails myself, I've enjoyed seeing families and children engage in outdoor activities and interact with nature. That's one of the reasons the Board is so happy to support maintaining these trails moving forward."

In recent years, the county has constructed 8 miles of non-motorized trails as part of the Border-to-Border Trail initiative and has plans to complete an additional 12 miles in the near future. The construction of these trails has been funded by the Roads and Non-Motorized millage approved by voters in 2016, as well as grants and private contributions.

"By constructing these trails and ensuring we have the resources to keep them in great condition, we are creating a trail system that everyone in Washtenaw County can be excited to have in their community," said the Coy Vaughn, Director of the Washtenaw County Parks and Recreation Commission.

The Washtenaw County Parks and Recreation Commission will work with the County Treasurer to manage this special revenue fund, including overseeing investment strategy. Money raised from the fund will be used for various maintenance activities, including safety inspections, debris removal, minor pavement repair, and more.

This is the second special revenue fund of this type to be approved by the Board in recent years. In 2018, the Board approved a special revenue fund to cover costs for the ongoing stewardship of Washtenaw County nature preserves.



"It's exciting that Commissioners created a second special revenue fund for the perpetual maintenance of trails in addition to the natural areas maintenance fund. I'm investing both portfolios in fossil-fuel-free stocks and green bonds," said Washtenaw County Treasurer Catherine McClary.

"We want to acknowledge and thank the community volunteers from the Huron Waterloo Pathways Initiative," said Jason Maciejewski, Washtenaw County Commissioner for District 1. "Not only have they helped build a groundswell of support for the Border2Border trail and all of the connecting trails, but their private donations make up half of the initial contribution to this special revenue fund."

###

The **Washtenaw County Board of Commissioners** is comprised of nine elected officials representing different Washtenaw County communities. The current Board will serve from January 2021 through December 2022.

[Click here](#) to find the list of Commissioners by district.

You can stay up to date on the latest from the Board of Commissioners by visiting [Washtenaw.org/BOC](http://Washtenaw.org/BOC), or by following them on [Twitter](#), [Facebook](#), and [Instagram](#).

## Community Development Block Grant (CDBG) Allocations: Fiscal Year 2021-2022

PLACE	Final HUD Figures	
	FY 2021-22 % of Allocation	FY 2021-22 CDBG Project Allocation
Ann Arbor City	44.38%	\$ 425,183.96
Ann Arbor Township	0.86%	\$ 8,208.73
Bridgewater Township	0.25%	\$ 2,376.08
Dexter Township	1.20%	\$ 11,511.29
Lima Township	0.53%	\$ 5,034.57
Augusta Township	1.14%	\$ 10,876.18
Manchester Township	0.89%	\$ 8,529.82
Northfield Township	2.11%	\$ 20,206.39
Pittsfield Township	8.50%	\$ 81,484.29
Salem Township	1.02%	\$ 9,760.17
Saline City	1.68%	\$ 16,083.73
Saline Township	0.48%	\$ 4,611.64
Scio Township	2.98%	\$ 28,572.34
Superior Township	3.70%	\$ 35,455.66
Webster Township	0.90%	\$ 8,644.07
York charter Township	1.29%	\$ 12,343.30
Ypsilanti City	9.41%	\$ 90,200.71
Ypsilanti Township	17.25%	\$ 165,274.97
City of Dexter	0.96%	\$ 9,209.73
Sylvan Township	0.47%	\$ 4,536.34
<b>TOTAL</b>	<b>100.00%</b>	<b>\$ 958,104.00</b>

Allocation Formula: (% Population) + 2(%Poverty) + (% housing problems)

**Definitions:**

- 1) % Population = City/Township's % of total Urban County population (Source: 2015-2019 American Community Survey, [census.gov/programs-surveys/acs/data.html](https://www.census.gov/programs-surveys/acs/data.html))
- 2) % Poverty = City/Township's % of total people in poverty in Urban County (Source: Source: 2015-2019 American Community Survey, [census.gov/programs-surveys/acs/data.html](https://www.census.gov/programs-surveys/acs/data.html))
- 3) % Housing Problems = % of total households in Urban County with at least 1 of 4 housing problems\* (Source: HUD 2013-2017 Comprehensive Housing Affordability Strategy (CHAS) data, [huduser.gov/portal/datasets/cp.html](https://www.huduser.gov/portal/datasets/cp.html))

*\*The 4 Housing Problems are defined as: incomplete kitchen facilities, incomplete plumbing facilities, more than 1 person per room, and cost burden greater than 30%.*

A RESOLUTION DECLARING A LOCAL STATE OF EMERGENCY WITHIN  
WASHTENAW COUNTY AS OF MARCH 17, 2021 TO CONTINUE THROUGH  
DECEMBER 31, 2021 DUE TO THE SUSTAINED PRESENCE OF COVID-19

WASHTENAW COUNTY BOARD OF COMMISSIONERS

March 17, 2021

*Prepared by: Michelle Billard, Corporation Counsel*

WHEREAS, the Novel Coronavirus, COVID-19 outbreak has been declared a pandemic by the World Health Organization and the magnitude of the spread and its significant impact on the health, education, commerce, and overall daily life is unprecedented; and

WHEREAS, various states of emergency at the local and federal levels have been declared since March 2020 due to the widespread, severe impact of COVID-19 across the county; and

WHEREAS, leading up to March 17, 2021, Washtenaw County experienced and continues to experience the occurrence and threat of widespread and severe damage, injury, loss of life and/or property caused by the COVID-19 pandemic; and

WHEREAS, since the beginning of the COVID-19 pandemic, public bodies have been permitted to meet entirely remotely due to exposure concerns through various amendments to Act 276 of 1976, the Open Meetings Act; and

WHEREAS, at the end of March, public bodies will no longer be able to meet remotely for any reason as outlined in the Open Meetings Act; and

WHEREAS, pursuant to the Open Meetings Act, public bodies may meet entirely remotely after March 31, 2021 and up to December 31, 2021 if a local state of emergency has been declared; and

WHEREAS, COVID-19 still poses a very real danger to the residents of Washtenaw County and positive cases are still regularly occurring despite efforts to vaccinate the population; and

WHEREAS, due to the sustained presence of COVID-19 in Washtenaw County, public bodies should still meet remotely to avoid unnecessary exposure to the members of the body and the members of the public; and

WHEREAS, given the above and pursuant to MCL 30.410 of the Emergency Management Act, Sue Shink, Chair of the Board of Commissioners, finds it necessary to declare a local state of emergency within Washtenaw County as of March 17, 2021; and

WHEREAS, the Board of Commissioners must consent in order for the local state of emergency to continue within the County beyond the first seven (7) days after declaration; and

WHEREAS, the Washtenaw County Board of Commissioners considers continuing the local state of emergency beyond the initial seven (7) days to be in the best interests of the public health of the residents of Washtenaw County.

NOW THEREFORE BE IT RESOLVED, pursuant to Act 390 of 1976, the Emergency Management Act, as amended, the Chair of the Washtenaw County Board of Commissioners, Sue Shink, hereby declares a local state of emergency exists in Washtenaw County as of March 17, 2021 due to the sustained presence of COVID-19 within Washtenaw County; and

BE IT FURTHER RESOLVED, the circumstances prompting the local state of emergency in Washtenaw County are in the form of widespread and severe damage, injury and loss of life and/or property resulting from the COVID-19 pandemic; and

BE IT FURTHER RESOLVED, there are specific concerns over various public bodies within Washtenaw County being able to continue to conduct business and host public meetings remotely in accordance with the remote meeting provisions outlined in Act 276 of 1976, the Open Meetings Act, as amended; and

BE IT FURTHER RESOLVED, there are also significant concerns that without a remote option to participate in public meetings and public comment, members of the public could unnecessarily expose themselves to COVID-19 by participating in public meetings in an in-person setting; and

BE IT FURTHER RESOLVED, by declaring a local state of emergency, public bodies within Washtenaw County will be able to conduct remote meetings while the emergency is in effect as permitted in the Open Meetings Act; and

BE IT FURTHER RESOLVED, pursuant to the Emergency Management Act, the Washtenaw County Board of Commissioners consents to the continuation of the local state of emergency as declared by the Chair beyond the initial seven (7) days outlined in the Act as the circumstances prompting the emergency will continue to exist into the coming months and extending the emergency is in the best interests of Washtenaw County; and

BE IT FURTHER RESOLVED, the local state of emergency shall continue to be in effect until December 31, 2021 unless a change in circumstances justifies cessation by the Board of Commissioners by resolution at an earlier date.

COMMISSIONER	Y	N	A	COMMISSIONER	Y	N	A	COMMISSIONER	Y	N	A
Beeman	X			Maciejewski	X			Shink	X		
Hodge	X			Morgan	X						
Jefferson	X			Sanders	X						
LaBarre	X			Scott	X						

CLERK/REGISTER'S CERTIFICATE - CERTIFIED COPY

ROLL CALL VOTE:

9 0 0

STATE OF MICHIGAN )

I, Lawrence Kestenbaum, Clerk/Register of said County of Washtenaw and Clerk of Circuit Court for said County, do hereby certify that the foregoing is a true and accurate copy of a resolution adopted by the Washtenaw County Board of Commissioners at a session held at the County Administration Building in the City of Ann Arbor, Michigan, on March 17, 2021, as it appears of record in my office.

COUNTY OF WASHTENAW)<sup>SS</sup>.

In Testimony Whereof, I have hereunto set my hand and affixed the seal of said Court at Ann Arbor, this 18<sup>th</sup> day of March, 2021.

LAWRENCE KESTENBAUM, Clerk/Register

BY: \_\_\_\_\_  
Deputy Clerk



Res. No. 21-050
-----------------

**Washtenaw County Road Commission  
TOWNSHIP/STAFF REPORT**

**For the period of February 22 thru March 7, 2021**

**Board Meeting Date: March 16, 2021**

**TOWNSHIP REPORT**

---

**MAINTENANCE**

Scraping of gravel roads and patching of paved roads were performed throughout the county. In addition, the following maintenance activities were performed in individual townships:

**ANN ARBOR TOWNSHIP**

- Limestone Patch – Maple Road, Thornoaks Drive: 31 tons

**AUGUSTA TOWNSHIP**

- Limestone Patch – Bunton Road, Judd Road, Talladay Road, Torrey Road: 85 tons

**BRIDGEWATER TOWNSHIP**

- Limestone Patch – Braun Road, Fisk Road, Hogan Road, Kaiser Road, Lima Center Road, Neblo Road, Sheridan Road: 59 tons
- Repaired Mailbox – Willow Road

**DEXTER TOWNSHIP**

- Limestone Patch – Fleming Road, McKinley Road, North Lake Road, Riker Road, Winston Road, Wylie Road: 88 tons

**FREEDOM TOWNSHIP**

- Drainage – Hieber Road
- Limestone Patch – Eisman Road, Hieber Road: 32 tons

**LIMA TOWNSHIP**

- Cut Bleeders – Dancer Road, Fletcher Road, Jerusalem Road, Lima Center Road, Sager Road, Steinbach Road, Trinkle Road, Waltrous Road
- Limestone Patch – Beach Road, Easton Road, Dancer Road, Fletcher Road, Guenther Road, Jerusalem Road, Lima Center Road, McKinley Road, Trinkle Road, Wylie Road: 148 tons

**LODI TOWNSHIP**

- Limestone Patch – Dell Road, Diuble Road, Ellsworth Road, Gensley Road, Saline Waterworks Road, Tessmer Road, Waters Road, Zeeb Road: 165 tons



**Washtenaw County Broadband Task Force**  
 Established by the Washtenaw County Board of Commissioners  
 Working to Achieve Countywide Broadband Equity by 2022



## VIRTUAL Meeting Minutes

Thursday, February 18, 2021  
 8:00 – 9:00 A.M.

- I. Call to Order | Introductions / Roll Call  
 Chair Fuller called the meeting to order at 8:01 am  
 Present:
 

Barb Fuller	Chair of the Broadband Task Force
Ben Fineman	Vice Chair of the Broadband Task Force
Kyle Mazurek	Comcast
Commissioner Shannon Beeman	District 3
Commissioner Jason Maciejewski	District 1
Gary Munce	Implementation
Diane O’Connell	Ann Arbor Township
LJ Walter	Northfield Township (alternate)
Duane Luick	Lima Township
John Kingsley	Webster Township
Amanda Nimke-Ballard	Sylvan Township
Karen Nolte	Dexter Township
Don Stein	Bridgewater Township
Alec Jerome	Scio Township
Valisa Bristle	Freedom Township
Belynda Domas	Augusta Township
Gary Pirkola	Saline Township
Lisa Moutinho	Manchester Township
Members of the public	Lamar Weir (Congresswoman Dingell)
	Cal Messing
	Scott Wooster
	Chris Scharrer
  
- II. Approval of the Agenda  
 Approval of agenda as presented motioned by Munce, seconded by Kingsley  
 Unanimous approval
  
- III. Approval of December 17, 2020 Meeting Minutes  
 Note: January 2021 meeting was cancelled  
 Approval of minutes as presented motioned by Munce, seconded by Nimke-Ballard  
 Chair Fuller asked for December 2021 meeting information to be updated to include date of meeting  
 Unanimous approval

IV. Welcome and Review

Level setting for our new and returning BBTF members

Gary Munce reviewed document that outlines historic activity and actions of group, including highlights of milestones and a timeline. Reminded members the BBTF website is also a good resource for information

V. Updates

A. RDOF Award (Rural Digital Opportunity Fund)

2 award winners in Washtenaw County. Midwest Energy and Mercury Wireless  
6691 locations awarded, 4804 will be fiber connectivity  
(currently we have 8,000 locations unserved)  
RDOF Funding is operational, \$3.7 million over 10 years

Ziggy Fish from CTC then offered a presentation that gave an overview of opportunities to cover those areas/locations that remain unserved through RDOF, options and strategies that could serve to provide coverage, including the consideration of a new grant (NTIA) that has been discussed as a result of COVID. He will be working with BBTF Leadership to outline a plan.

He also reminded the group that patience is the key with RDOF – some areas may be 6 years before receiving service. We don't yet know the build schedule and/or priority of the carriers, and they are working in multiple communities.

The Broadband Task Force has posted a map of the areas awarded RDOF funding.

B. Back to School Hotspots

Gary Munce updated on the status of hotspots. 9 townships are now connected or will be very soon, providing wifi in the parking lots of township halls. Ann Arbor, Augusta, Bridgewater, Freedom, Lodi, Northfield, Scio. Sharon, and Sylvan pending.

VI. Action Items

None

VII. New Business

None

VIII. Old Business

None

IX. Township Updates

None

X. Public Comment

Lamar Weir from Congresswoman Dingell's office stated that the south side of the City of Ypsilanti is having some challenges with digital connectivity and asked about the hotspot program that could help children with timely submission of homework assignments. Chair Fuller and Vice Chair Fineman offered some resources (Toyota/WISD grant) and advised Mr. Weir they'd follow up with an email that provided additional information.

XI. Announcements



None

XII. Adjournment

Motion to adjourn made by Stein, seconded by Beeman

Unanimous approval

The meeting adjourned at 9:02 am

**NEXT MEETING:** March 18, 2021 @ 8:00-9:00AM – Zoom format

DRAFT